



PAVEMENT TO PARKS

TRANSFORMING THE PUBLIC REALM IN SAN FRANCISCO

NEW STRATEGIES FOR A NEW AGE

22nd Annual Building Livable Communities Conference for Local Elected Officials

Yosemite National Park, 03.16.2013

TRANSFORMING THE PUBLIC REALM IN SAN FRANCISCO

PAVEMENT TO PARKS

1. About The Program
2. What: Urban Interventions
3. How: Process
4. Why: Program Benefits
5. New Strategies for a New Age





1. ABOUT THE PROGRAM

ABOUT THE PROGRAM



our team:



CITY DESIGN GROUP

City Design Group
San Francisco Planning Department



ABOUT THE PROGRAM

PAVEMENT TO PARKS

our inspiration:



Janette Sadik-Khan
NYC Transportation Commissioner



ReBar, San Francisco
First Park-ing Day installation in SOMA

ABOUT THE PROGRAM

PAVEMENT TO PARKS

STREETS = 25%
CITY'S TOTAL AREA.

ABOUT THE PROGRAM

PAVEMENT TO PARKS

program goals:



Reimagining the public realm



Strengthening commerce



Fostering community interaction

ABOUT THE PROGRAM

PAVEMENT TO PARKS

program outcomes (2009-2013):



Castro Plaza,
San Francisco

PLAZAS

Castro Plaza
Naples Green
San Jose-Guerrero Park
Showplace Triangle



PARKLET PROGRAM

754 Post Parklet,
Host: Farm Table

3 rounds of applications + 1 just opened
35 installed
30 under design review
200+ on waiting list



2. URBAN INTERVENTIONS

plazas:



WHERE:

- Under-utilized right-of-way
- Too much space allocated to cars
- Potential for new public space
- Pedestrian safety is a concern

PERMIT:

- Temporary street closure
- Test performance period
- Legislation of new street configuration

FUNDING:

- Mix of private/ public funding
- Case-by-case
- Average cost \$ 50K

URBAN INTERVENTIONS

PAVEMENT TO PARKS



plazas

Castro and 17th Street
Intersection/ *BEFORE*

URBAN INTERVENTIONS

SITE: Castro Neighborhood
USE: Local/Tourist destination
PERMIT: Street Closure
MAINTENANCE: CBD

PAVEMENT TO PARKS

plazas

Castro Plaza, *San Francisco*

URBAN INTERVENTIONS

PAVEMENT TO PARKS



plazas

San Jose-Guerrero
Intersection/ *BEFORE*

URBAN INTERVENTIONS

SITE: Mission District
USE: Residential Area
PERMIT: Street Closure
MAINTENANCE: Local Non-Profit

PAVEMENT TO PARKS



plazas

San Jose-Guerrero Park,
San Francisco

URBAN INTERVENTIONS

SITE: Excelsior Neighborhood

USE: Residential Area

PERMIT: Street Closure

MAINTENANCE: City

PAVEMENT TO PARKS

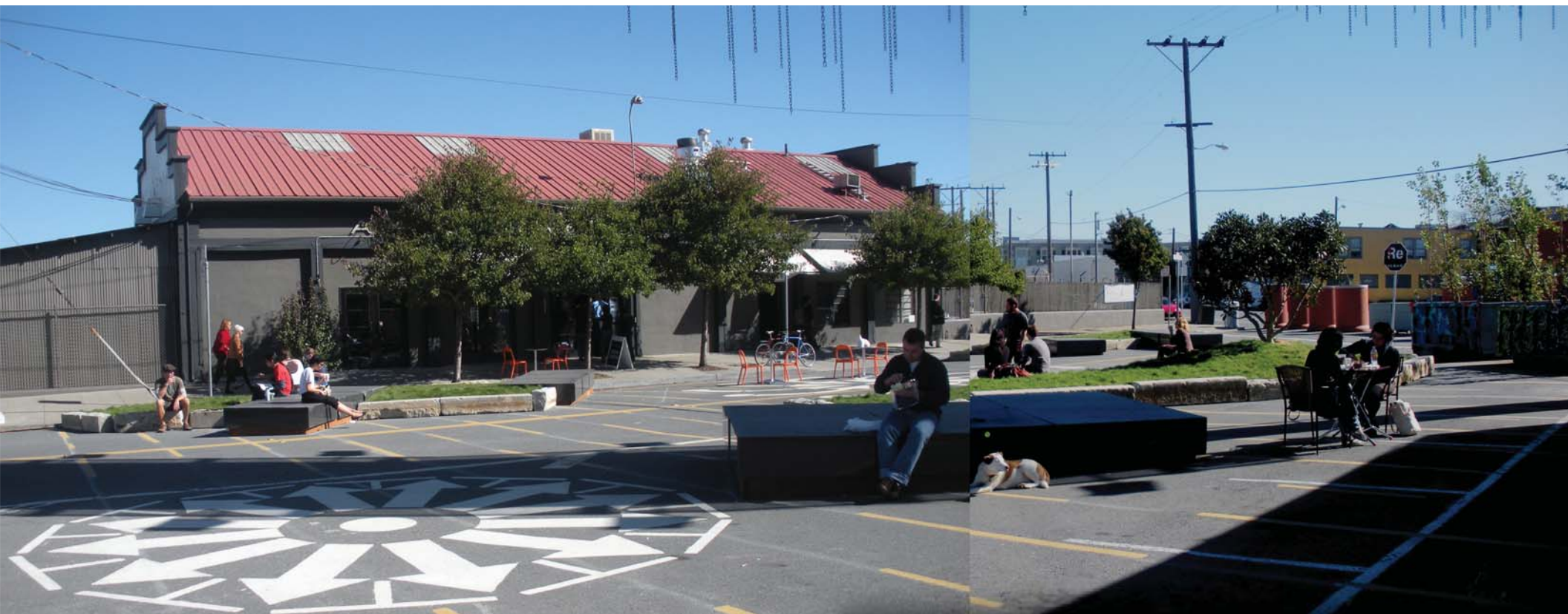
plazas

Naples Green, *San Francisco*

URBAN INTERVENTIONS

SITE: Showplace Square
USE: Light Industrial Area
PERMIT: Street Closure

PAVEMENT TO PARKS



plazas

Showplace Triangle,
San Francisco

PARKLET PROGRAM: OVERVIEW



parklet program:



WHERE:

Parking lane

PERMIT:

Temporary installation (2 PILOTS)

Test performance period

Permit system (TRANSFORMED PILOTS
INTO PROGRAM)

FUNDING:

Private sponsor

Average cost \$ 10k-15K per space

Hmmm...
how can I get a
parklet built in my
neighborhood?



SAN FRANCISCO parklet manual 2013



PARKLET PROGRAM: ROLES AND RESPONSIBILITIES



Stakeholder Roles



SAN FRANCISCO
PLANNING
DEPARTMENT

- Intake
- Design Review



SFMTA
Municipal Transportation Agency

- Transportation Review
- Bike Coordination



- Permitting
- Inspection

Applicant Roles



- Design
- Permitting fees
- Materials
- Construction / Installation
- Ongoing Maintenance
- Removal / Change of Ownership

PARKLET PROGRAM: APPLICANT RESPONSIBILITIES



Costs

Design

\$500 - \$4,000 (Typically 10-15% of total project cost)

Materials and construction

\$20,000 - 35,000

Fees

\$ 991 = BASE FEE + INSPECTIONS

\$ 650 = PARKING METER REMOVAL

\$ 221 = RENEWAL / EACH YEAR

Pro-bono services and donated materials

\$2,000 - \$30,000

**PARKLET
CONSTRUCTION:
~\$10K-15K
PER SPACE**

PARKLET PROGRAM: APPLICANT RESPONSIBILITIES

Parklets are public



Devils Tooth Bakery

- + Open to all members of the public
- + Cannot ask someone to leave parklet to make space for customers
- + No Table Service (Customers need to pick up their food inside)
- + Can bus tables

PARKLET PROGRAM: APPLICANT RESPONSIBILITIES

PAVEMENT TO PARKS

Parklets are maintained by sponsors



- + Upkeep and maintenance
- + Permit renewal
- + Removals and change of ownership
- + Request for information

PAVEMENT TO PARKS

City of San Francisco

PARKLET PROGRAM: PROCESS

PAVEMENT TO PARKS



Items to Submit:
Initial Application Form
Initial Site Plan and Photos
Concept Description
Letters Of Support

APPLICANT SUBMITS PARKLET PROPOSAL

INITIAL REVIEW BY MTA, DPW, PLANNING

PROPOSAL SELECTED

PLANNING ISSUES PUBLIC NOTICE
{ displayed for 10 days }

OBJECTIONS

DPW HOLDS PUBLIC HEARING

NO APPEAL

OFFICER AGAINST

OFFICER SUPPORTS

APPLICANT APPEALS

BOARD OF PERMIT APPEALS HOLDS PUBLIC HEARING

OFFICER AGAINST

OFFICER SUPPORTS

DESIGN DEVELOPMENT WITH PLANNING BEGINS



APPLICANT SUBMITS CONSTRUCTION DOCUMENTATION
{ 6 month with possible 6 month extension }

PLANNING COMMUNICATES REQUIRED REVISIONS

REVIEW BY MTA, DPW, PLANNING

APPLICANT SUBMITS FINAL APPLICATION PACKAGE TO PLANNING

APPLICANT PAYS PERMIT FEES TO DPW

MTA LEGISLATES PARKING CHANGES

PAVEMENT TO PARKS
PARKLET
oMatic

BOARD OF PERMIT APPEALS HOLDS PUBLIC HEARING

SOMEONE APPEALS

PERMIT GRANTED
{ 6 month with possible 6 month extension }



PERMIT REVOKED

SIGNIFICANT VIOLATION(S)

ENJOY PARKLET

PLANNING AND DPW POST-CONSTRUCTION ONSITE INSPECTION

APPLICANT BEGINS CONSTRUCTION



PLANNING AND DPW PRE-INSTALL ONSITE INSPECTION

APPLICANT NOTIFIES DPW 72 HOURS BEFORE CONSTRUCTION



REMEMBER TO: KEEP IT CLEAN. WATER THE PLANTS. RENEW IN ONE YEAR.

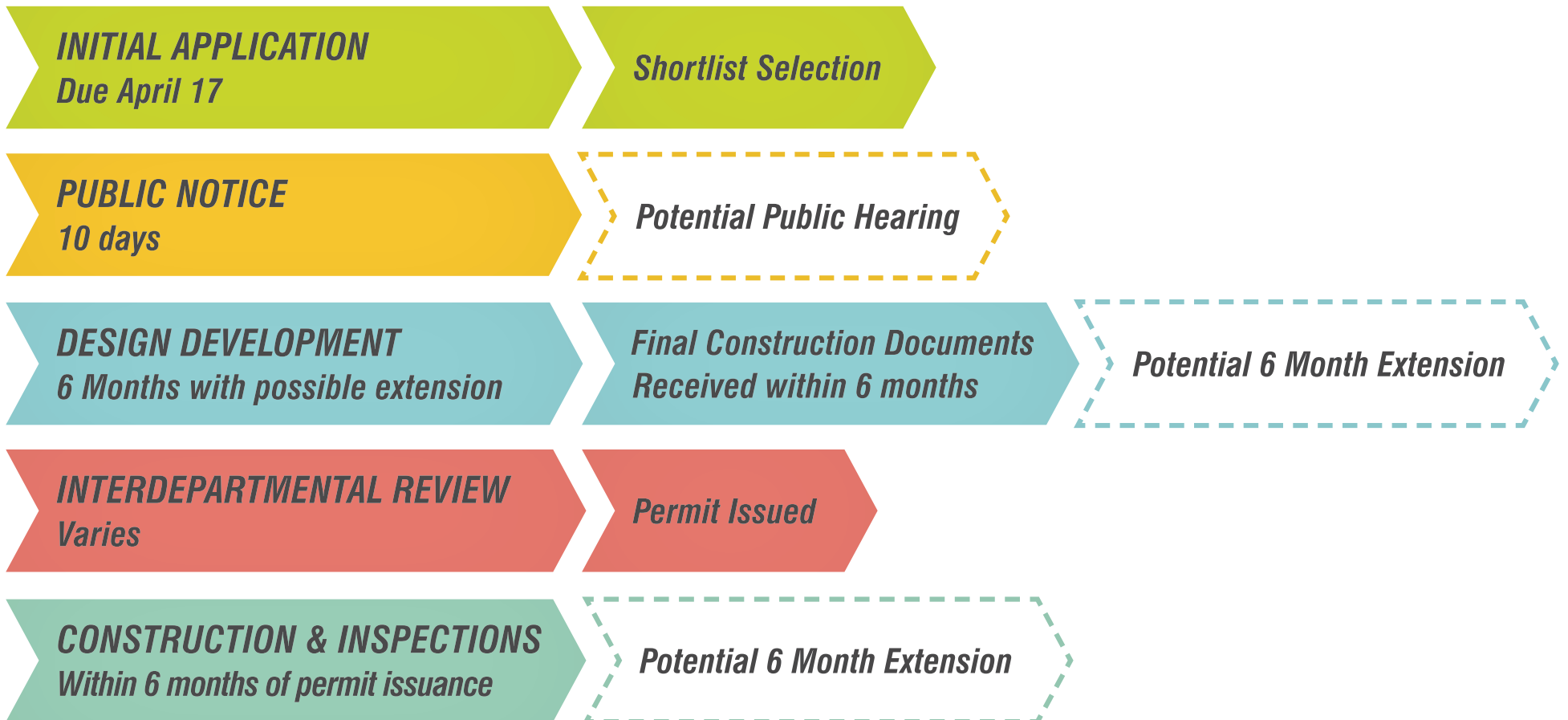


SAN FRANCISCO PLANNING DEPARTMENT

PARKLET PROGRAM: PROCESS



Time Line



PARKLET PROGRAM: SITE DESIGN

PAVEMENT TO PARKS



Polk Street
Host: Quetzal Cafe

24th Street, Noe Valley
Host: Martha's Bros. Cafe

Powell Street, Downtown
Host: Audi

1 SPACE

2 SPACES

**MULTIPLE
SPACES**

PARKLET PROGRAM: SITE DESIGN

PAVEMENT TO PARKS

design considerations:



IMPORTANT ISSUES:

Drainage: maintain water flow along curb

Street slope: <5%

No bolting to pavement allowed

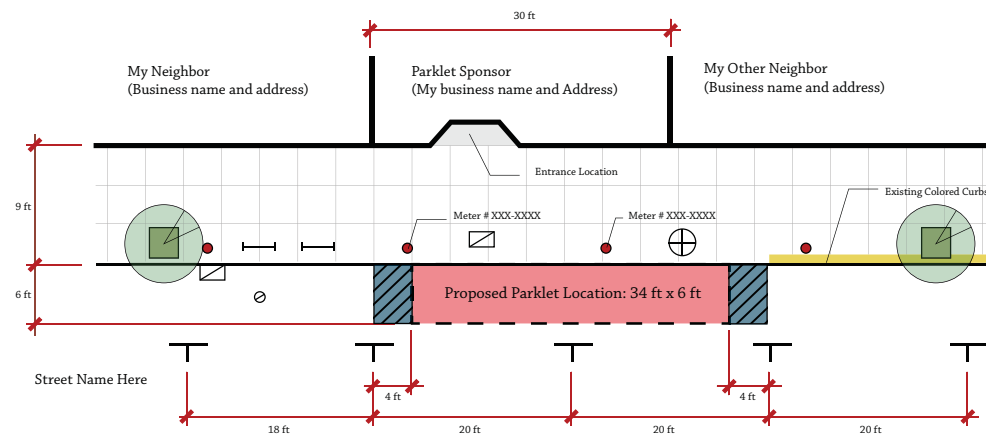
Utilities: check for location

Bike Parking

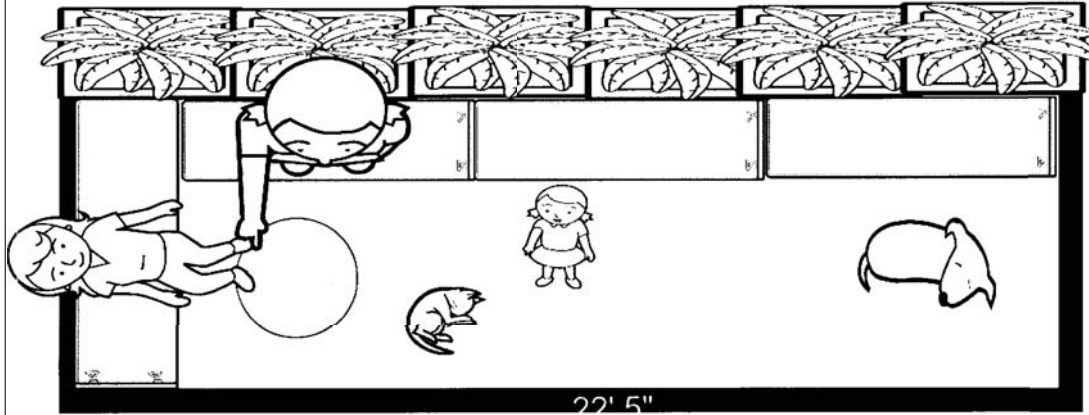
Color curb zones: changes need to be legislated

Divisadero Street
Parklet installation

**6'-WIDE
20'-LONG
4'-SETBACK**



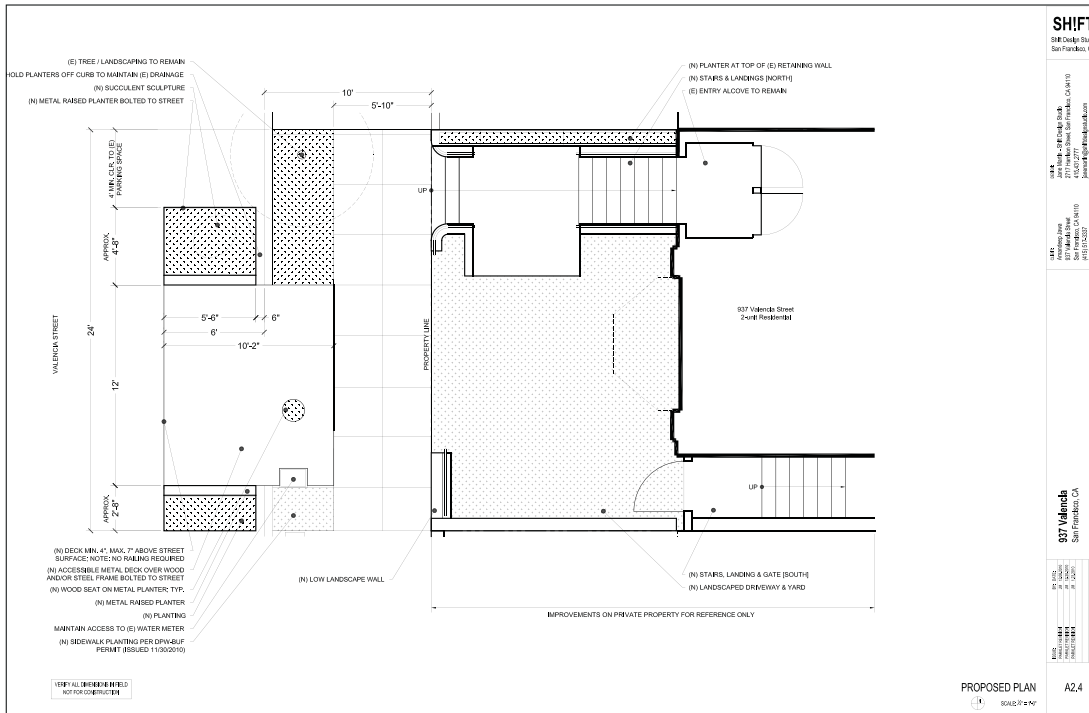
EHS Parklet Plan A



parking meter # 700-14260

parking meter# 700-14280

PAVEMENT TO PARKS



URBAN INTERVENTIONS

SITE: Mission Neighborhood

SPONSOR: Bike shop

USE: Seating/ Bike repair

+ Bike corral;

PARALLEL PARKING (1)

PAVEMENT TO PARKS



parklets

Valencia Street

Host: Freewheel Bicycles

URBAN INTERVENTIONS

SITE: Mission District
SPONSOR: Art Gallery
USE: Seating, Play
PARALLEL PARKING (1)

PAVEMENT TO PARKS



parklets

22nd Street Street
Host: Fabric 8

URBAN INTERVENTIONS

SITE: Divisadero

SPONSOR: Coffee/ Bike shop

USE: Seating

PARALLEL PARKING (2)

PAVEMENT TO PARKS

parklets

Divisadero Street
Host: Mojo Cafe

URBAN INTERVENTIONS

SITE: Mission District
SPONSOR: Coffee Shop
USE: Seating, bike parking
PARALLEL PARKING (3)



parklets

Valencia Street
Host: Four Barrel Coffee

URBAN INTERVENTIONS

PAVEMENT TO PARKS

SITE: Sunset District

SPONSOR: Bakery

USE: Seating, people watching

DIAGONAL PARKING (2)



parklets

Noriega Street

Host: Devil's Teeth Bakery

URBAN INTERVENTIONS

SITE: Mission District
SPONSOR: Resident
USE: Play
PARALLEL PARKING (1)

PAVEMENT TO PARKS



parklets

Deepistan National Parklet
Host: Resident

URBAN INTERVENTIONS

PAVEMENT TO PARKS

SITE: Downtown
SPONSOR: Audi
USE: Seating, people watching
PARALLEL PARKING (Block)



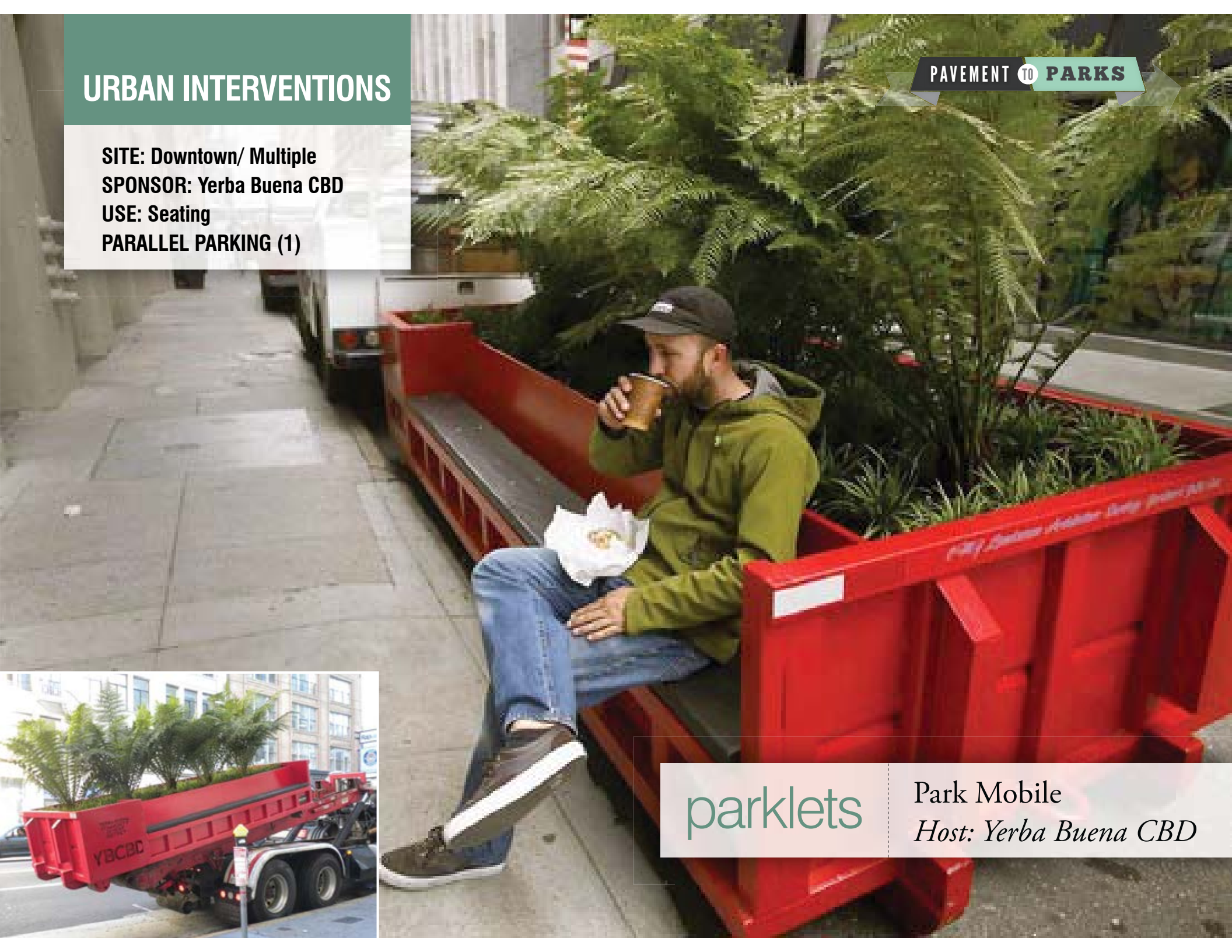
parklets

Powell Street Promenade
Host: Audi

URBAN INTERVENTIONS

PAVEMENT TO PARKS

SITE: Downtown/ Multiple
SPONSOR: Yerba Buena CBD
USE: Seating
PARALLEL PARKING (1)



parklets

Park Mobile
Host: Yerba Buena CBD



4. WHY: BENEFITS

WHY: BENEFITS

economic benefits:



Mission Community Market,
Near 22nd street and Bartlett parklet
Host: Neighborhood Collaborative

TODAY

GREAT INTEREST IN PARKLETS

- 35 installed
- 30 under design review
- 200+ potential sponsor on waiting list
- NEW RFP OPEN

INTERVIEWS TO SPONSORS SHOW INCREASE IN BUSINESS

PAVEMENT TO PARKS RESERACH LAB- POST-OCCUPANCY EVALUATION OF PROJECTS

WHY: BENEFITS

social benefits:



Deepistan National Parklet
Wedding event, August 2012

DEMOCRATIC SPACE

- application open to everyone
- less emphasis on design skills
- emphasis on neighborhood participation in the design/ construction process

INCREASED PUBLIC SPACE

- more space allocated to the City's public realm

HUMAN INTERACTION

- neighborhood interaction
- new connections and partnerships

SPILLOVER INTO NEIGHBORHOOD

- parklet as seed for greater urban regeneration process



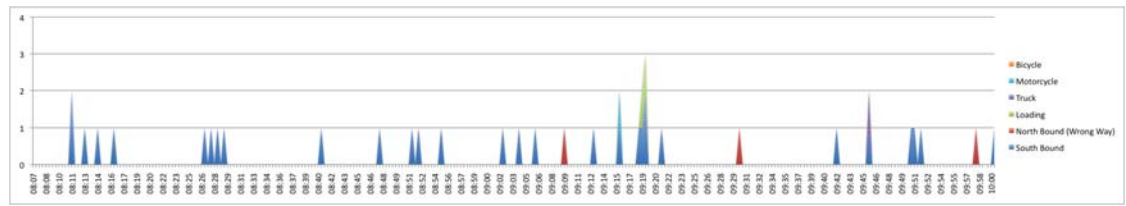
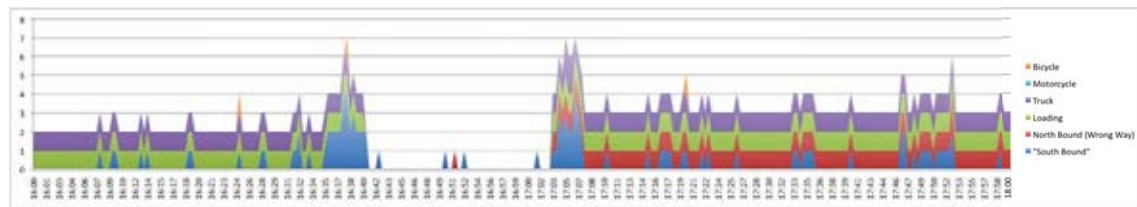
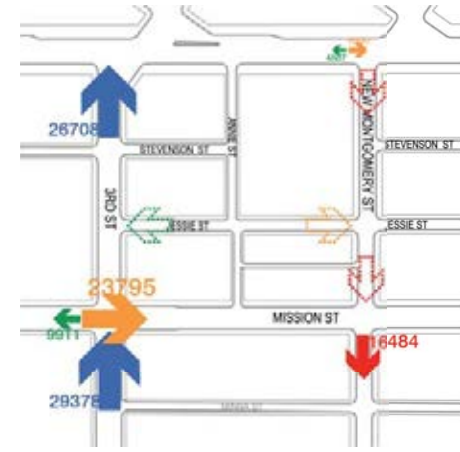
5. New Strategies for a New Age: NEXT GENERATION OF PUBLIC SPACES

UPCOMING INTERVENTIONS

PAVEMENT TO PARKS

SITE: Downtown
PARTNERS: YBCDB
USE: New plaza
PERMIT: Temporary Street Closure

annie alley pocket plazas



UPCOMING INTERVENTIONS

PAVEMENT TO PARKS

SITE: Excelsior Neighborhood
PARTNERS: AEG and others
USE: Corner Plaza, Community Market
PERMIT: Temporary Street Closure

Persia Triangle



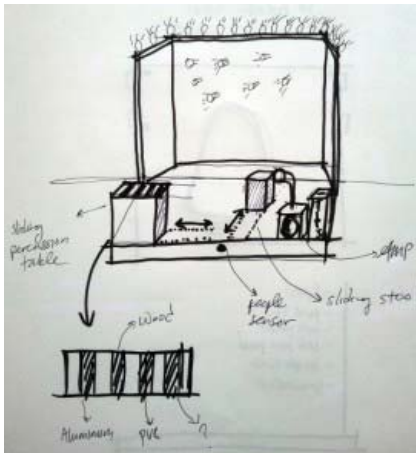
UPCOMING INTERVENTIONS

PAVEMENT TO PARKS

SITE: Citywide
USE: Space activation
PERMIT: TBD

Prototyping for public space activation

street stage



bike corral competition

portable bicycle corral **DESIGN COMPETITION**

- › information session February 25, 2012 noon at SPUR
- › all entries will be part of an exhibition at SPUR in April
- › winning entry will receive:
 - \$500 cash prize
 - fabrication of prototype for Yerba Buena neighborhood

Registration and competition details available at:
www.ybcba.org

\$500 cash prize
&
registrar online by
March 1, 2012



The logo features the words "PAVEMENT TO PARKS" in a bold, sans-serif font. "PAVEMENT" is in white on a black rectangular background, "TO" is in white inside a white circle, and "PARKS" is in black on a light green rectangular background. The entire logo is set against a grey ribbon-like shape that tapers at both ends, with a faint silhouette of a person on a bicycle on the right side.

PAVEMENT TO PARKS

www.pavementtoparks.org

email us at:
sfpavementtoparks@sfgov.org