



INSTITUTE FOR  
LOCAL GOVERNMENT<sup>SM</sup>



# Leading Local

**Artificial Intelligence and Local  
Government**

Wednesday, June 28, 2023

10:30 a.m. - 12:00 p.m.

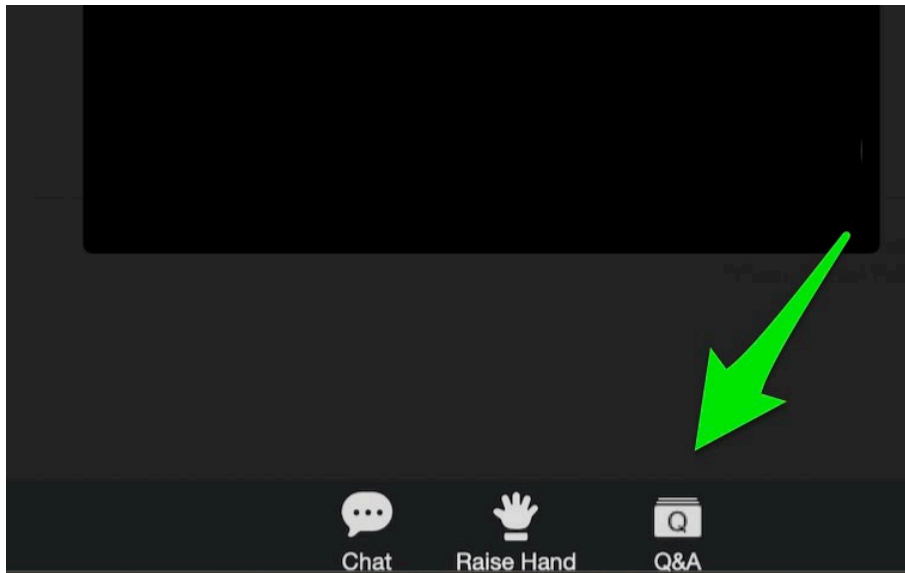
# WELCOME!



**Erica Manuel**  
CEO & Executive Director  
Institute for Local Government

# TECH OVERVIEW & HOUSEKEEPING

- All webinar participants will be on **MUTE** for the duration of the event.
- Please type any content questions for into the **Q&A BOX** at any time during the session.
- Please type into the **CHAT** to notify the meeting host of any logistical questions or technical issues.



- A recording of the session will be available shortly after the webinar.

# ABOUT THE INSTITUTE FOR LOCAL GOVERNMENT



# NON-PROFIT, NON-PARTISAN AND HERE TO HELP

- The Institute for Local Government is the non-profit training and education affiliate of three statewide local government associations
- Together with our affiliates, we serve over 2,500 local agencies – cities, counties and special districts
- We provide practical and easy-to-use resources so local agencies can effectively implement policies on the ground



**California Special  
Districts Association**  
*Districts Stronger Together*

# ILG'S PROGRAMS AND SERVICES

## Program Areas

Leadership & Governance

Civics Education & Workforce

Public Engagement

Sustainable & Resilient Communities



## Services

Education & Training

Technical Assistance

Capacity Building

Convening

Our mission is to help local government leaders **navigate complexity**, **increase capacity & build trust** in their communities



# AGENDA

## Quick Poll

## Overview of Artificial Intelligence

*What is it?*

*Types & Examples*

*Opportunities & Threats*

*Applications for Gov't*

*Resources*

## Q&A

## Wrap Up



# ZOOM POLL

Tell us a little about you...





# TODAY'S SPEAKER



## John Robichaux

AI Expert & Incoming Executive Director

Coleman Fung Institute for Engineering Leadership, UC Berkeley

- 25+ years working on critical issues facing leaders in government, industry, and civil society
- 15+ years working on artificial intelligence (AI)
- Taught at Harvard and Stanford
- Most recently, led Government and Executive Education programs for Stanford's flagship Institute for Human-Centered AI (HAI), offering programs for officials in 40+ countries and all 50 U.S. states
- Based out of Palo Alto, California



# AI AND LOCAL GOVERNMENT

JOHN ROBICHAUX

*INSTITUTE FOR LOCAL GOVERNMENT*

*WEBINAR – JUNE 28, 2023*

# TRADITIONAL CODING VS. AI

## TRADITIONAL CODING

- Excellent for well-known contexts
- Set of rules – can be cumbersome
- May require immense human work upfront
- Less effective in situations of uncertainty



## AI (AND MACHINE LEARNING)

- Excels in situations of uncertainty
- Models “learn” and adapt to meet a given objective
- May require immense compute power, time, and money (esp. upfront)
- Can dramatically reduce the volume of code needed (incl. human work)
- Often identifies connections not easily identified by humans



## EXAMPLE AREAS OF AI



Natural Language Processing (NLP)

Computer Vision

Robotics

Expert Systems

# TWO KEY TYPES OF AI

## “NARROW” AI

- Narrow use cases
- Can be hyper-optimized
- Can be extraordinarily safe, hyper-precise
- Been around for many years
- Most important for operational impact today
- Not getting the media attention
- Within reach of many organizations



## FOUNDATION MODELS

- Use immense amounts of data to build a “wide” model that can serve as a “foundation” to more honed use cases
- Basis of generative AI in the news today
- Currently, more prone to errors and hallucinations, especially when not fine tuned
- Accessible to only a handful of companies globally (due to time and cost involved)
- May be the future, down the road, but currently less operational for most needs
- Emergent properties!





## BIG PICTURE: TRANSFORMATIONAL AND LEGITIMATE WORRIES

- Unleash an incredible age of HUMAN creativity – for good and ill
- Medicine
- Education
- Science
- History
- Art
- Dark sides: error, bias, failure of human oversight, too much trust, bad counsel, public service technology unable to keep up

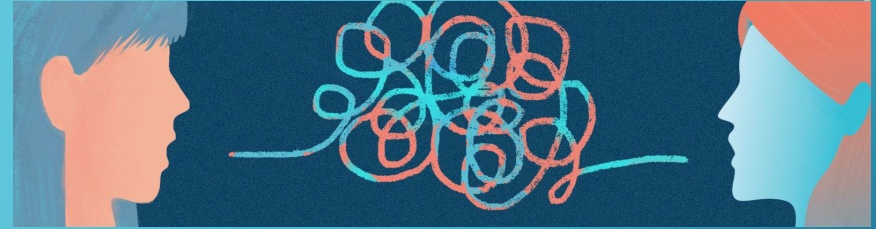




# GOVERNMENT USE CASES

- Wildfire planning
- Language-interpreter matching
- Flood mitigation/ dam release
- Predictive analytics (energy, traffic)
- Adjudication processes
- Mental health/ Public health resources
- Speech analysis (policing, education)
- Facial recognition (and bans)
- Brainstorming (neighborhood planning, architecture, etc.)
- Digital records

# CONCERNS FOR TODAY'S LEADERS



## ACROSS ALL LEADERS

- Executive Expertise – today's executives were almost all trained in the pre-AI era (incl. CTOs, CIOs)
- Gold Rush and Hype - snake oil everywhere
- Unstructured Data - and cost to structure
- Speed of advancements
- So many unknown impacts, outcomes
- Investment strategy

## NOTABLE FOR GOVERNMENTS

- Older workforce exacerbates the executive expertise concern
- Top talent goes to private sector
- Cutting edge AI remains only accessible to few companies globally (gov'ts, education, public service tech unable to keep up)
- Sensitive data
- Uniquely sensitive entity
- Antiquated systems even before AI
- Black box problem – accountability, auditability, limits of explainability
- Misinformation and local news deserts

# TOP TAKEAWAYS



## IMMENSE OPPORTUNITIES REMAIN IN NARROW AI – DON'T IGNORE THEM

Watch the headlines about large models, use when helpful and appropriate, but keep narrow AI in view



## YOU'RE NOT ALONE

Everyone is trying to keep up as advances accelerate and identify what is possible



## REAL POLICY CHOICES, PROFOUND RESPONSIBILITY

Privacy and surveillance, areas where safety present unique challenges, effectiveness and auditability, investment choices, and more...



# EXAMPLE RESOURCES

- [A Policy Maker's Guide to Artificial Intelligence for State and Local Governments](#), Carnegie Mellon University
- [AI for the People: The Use of AI to Improve Government Performance](#), Mark Fagan, Harvard Kennedy School
- University of California's four-campus [CITRIS Policy Lab](#) and [AI Policy Hub](#)
- Foundation Models: [Huge "Foundation Models" are Turbo-Charging AI Progress](#), *The Economist*; and the Stanford Center for Research on Foundation Models benchmarking project, [HELM \(Holistic Evaluation of Language Models\)](#)
- [The AI Awakening: What Does It Mean for the Economy?](#), Erik Brynjolfsson, Congressional Research Service
- Wildfires: [CalFire, Office of Wildfire Technology Research and Development](#) and [The power of AI in wildfire prediction and prevention](#) (World Economic Forum, using an example from Turkey)
- Santa Clara County and [Stanford RegLab](#) example: [Designing Accountable Health Care Algorithms: Lessons from COVID-19 Contact Tracing](#), NEJM Catalyst

# EXAMPLE RESOURCES

- UK example, [national AI strategy for local government](#)
- Flood control: [University of New Orleans Researchers to Use Artificial Intelligence to Detect Flood Control Deficiencies](#)
- U.S. Federal Agencies Examples: [Government by Algorithm: AI in Federal Administrative Agencies](#)
- [How AI Helps State and Local Governments Work Smarter](#), GovTech article by two Oracle directors
- [The Current Landscape for AI in State and Local Government](#), StateTech article by CDW rep
- [The Government and Public Services AI Dossier](#), Deloitte's AI Institute
- [AI Is Here To Stay In Your City And Local Government](#), Forbes

# QUESTIONS

Type any questions for the panelist into the **Q&A BOX**.





# RECORDING AVAILABLE SOON



The recorded presentation and materials will be shared electronically with all attendees a few days after the webinar.

# JOIN OUR WIDESPREAD NETWORK OF LOCAL GOV'T LEADERS



58 Counties

482 Cities

2,500+ Special Districts

20,000+ Local Agency Leaders

[www.ca-ilg.org/stayinformed](http://www.ca-ilg.org/stayinformed)



@instlocgov



Institute for Local Government



@InstituteForLocalGovt





**THANK YOU  
FOR JOINING US!**

**Artificial Intelligence & Local Gov't**  
Wednesday, June 28, 2023