

SUSTAINABLE RECREATION

HOW TO GET AN ECONOMIC BOOST WHILE PROTECTING AND
PRESERVING THE ENVIRONMENT

WEDNESDAY, AUGUST 31, 2022 | 10:30 AM – 12:00 PM

HOSTED BY:



IN PARTNERSHIP WITH:



THANK YOU FOR JOINING US!



Host & Moderator

MELISSA KUEHNE
Senior Program Manager
Institute for Local Government



WEBINAR OVERVIEW

Welcome

Setting the Context: Economic Impacts of Recreation

Sustainable Recreation: Examples from Mono County and the Town of Mammoth Lakes

Panel Discussion

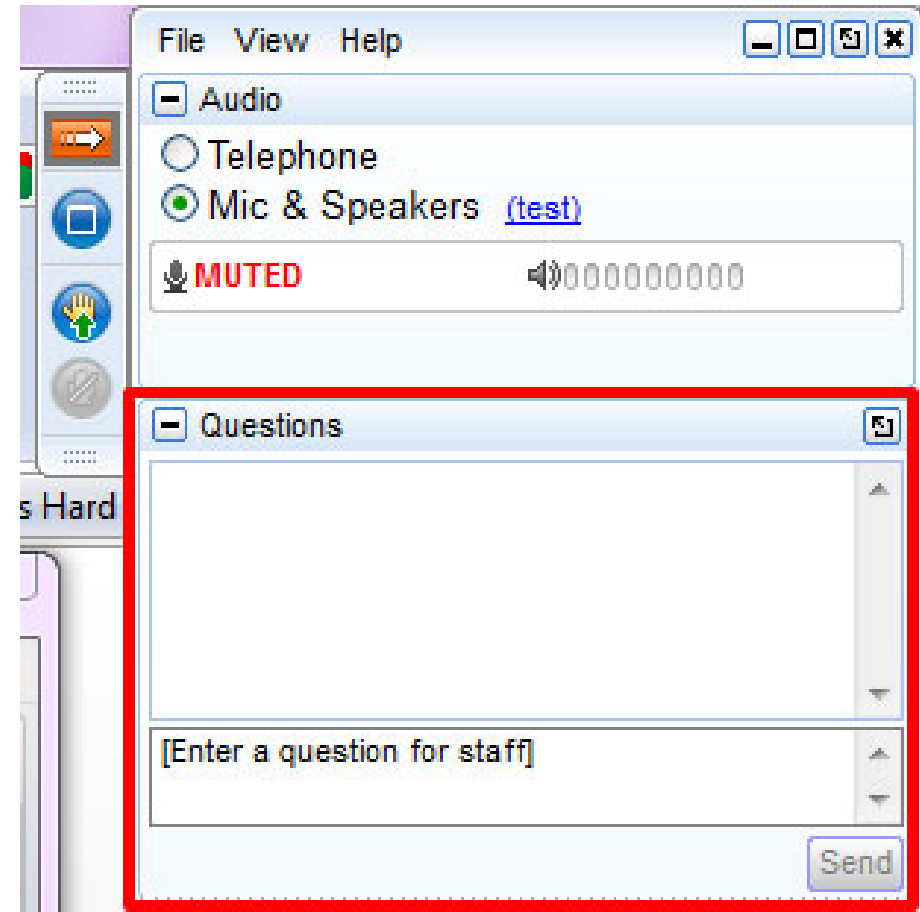
Audience Q&A

Wrap Up & Adjourn

We welcome your written questions and comments in the question box throughout the webinar

HOW TO ASK A QUESTION DURING THE WEBINAR

- All webinar participants will be on MUTE during the entire call.
- Please TYPE any questions into the question box at any time during the webinar.
- The moderator will read your questions during the question period at the end of the webinar.



ABOUT ILG



NON-PROFIT, NON-PARTISAN AND HERE TO HELP

- The Institute for Local Government is the non-profit training and education affiliate of three statewide local government associations
- Together with our affiliates, we serve over 2,500 local agencies – cities, counties and special districts
- We provide practical and easy-to-use resources so local agencies can effectively implement policies on the ground



**California Special
Districts Association**
Districts Stronger Together

ILG'S PROGRAMS AND SERVICES

Program Areas

Leadership & Governance

Civics Education & Workforce

Public Engagement

Sustainable & Resilient Communities



Services

Education & Training

Technical Assistance

Capacity Building

Convening

Our mission is to help local government leaders **navigate complexity**, **increase capacity & build trust** in their communities

TODAY'S PRESENTERS



DANNA STROUD

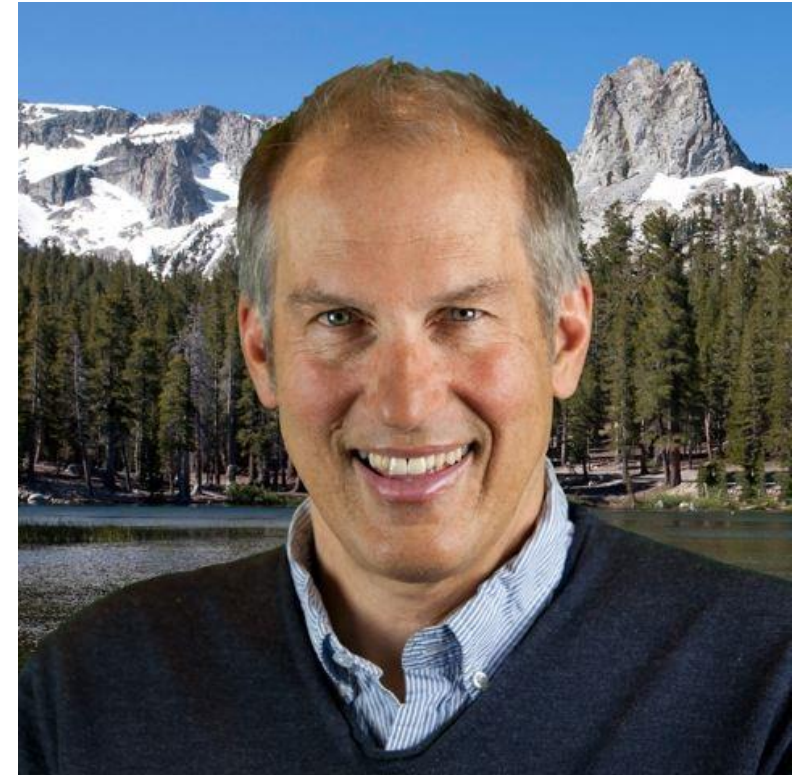
Regional Community-Based Solutions
Manager

The Governor's Office of Business and
Economic Development



BOB GARDNER

County Supervisor
Mono Lake County



JOHN WENTWORTH

Mayor Pro Tem
Town of Mammoth Lakes

INSTANT POLLING

Who is on the room...

- What type of agency are you with?
- What part of the state are you from?



DANNA STROUD

*Regional Community-Based
Solutions Manager*

The Governor's Office of Business
and Economic Development



Sustainable Recreation

Economic Impacts
ILG + RCRC Webinar
August 31, 2022
Danna Stroud, GO-Biz



California
Community & Place-Based
Solutions

THE GO-BIZ MISSION

The Governor's Office of Business and Economic Development (GO-Biz) serves as the State of California's leader for job growth, economic development, and business assistance efforts. Our teams are comprised of experts that span industries, geographies and business backgrounds.



California
Community & Place-Based
Solutions

THE GO-BIZ TEAM



**CA Business
Investment
Services**



Permit Assistance



**International
Affairs & Trade**



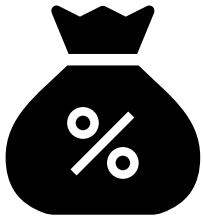
**Office of the Small
Business
Advocate**



**Zero Emission
Vehicles (ZEV)**



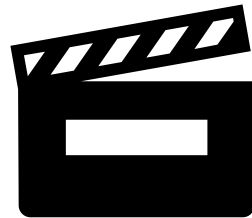
Energy & Climate



**California
Competes
Tax Credit**



**Community &
Local Equity
Grants**



**CA Film
Commission**



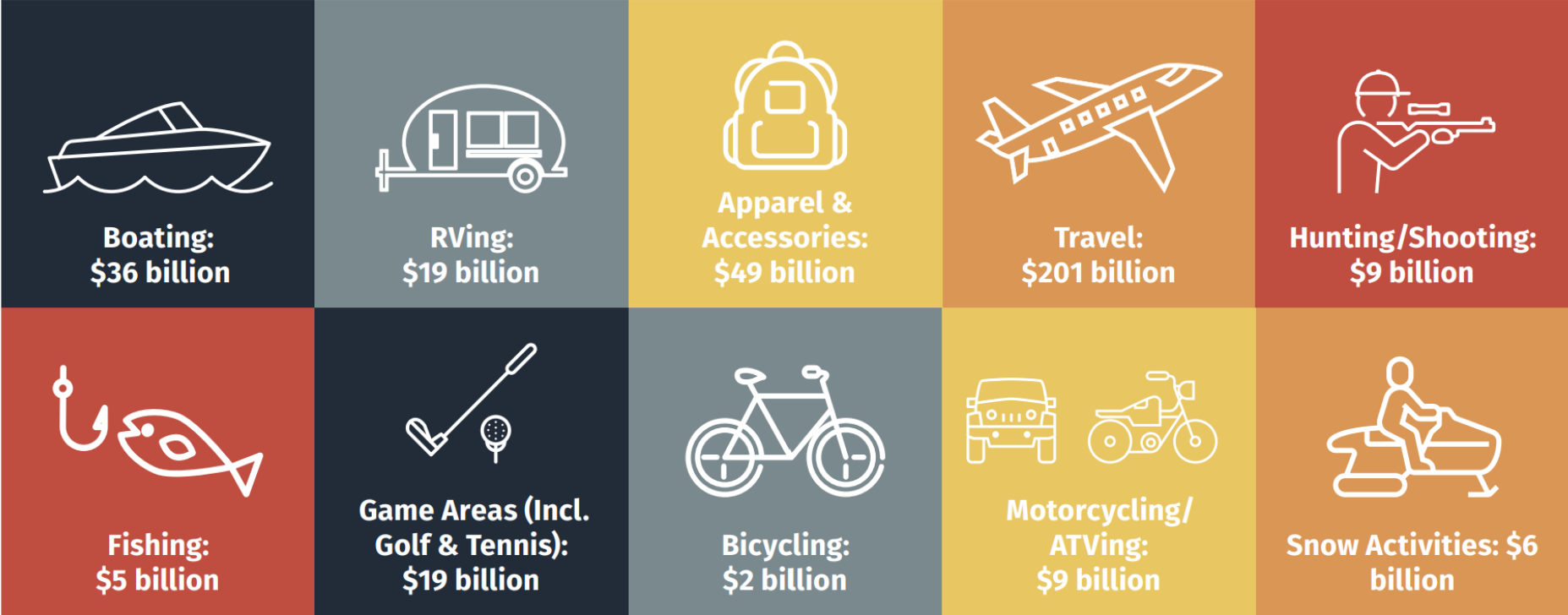
**Infrastructure and
Economic
Development Bank
(I-Bank)**



Visit CA

Outdoor recreation consists of many activities.

Value-added (or GDP) contribution by activity in 2019.³



Source: State Outdoor Business Alliance Network/ SOBAN
"Inspiring the Future Outdoor Recreation Economy 2021"

The U.S. outdoor recreation economy is big

Compare the 2020 GDP contribution of outdoor recreation to other familiar industries.

Outdoor Recreation:
\$374 Billion
value-added contribution to GDP

Motor Vehicle Manufacturing:
\$155 Billion

Oil, Gas, and Coal:
\$114 Billion

Air Transportation:
\$142 Billion

Performing Arts:
\$95 Billion

Source: Bureau of Economic Analysis, Outdoor Recreation Satellite Account and Regional Economic Accounts.

United States

Outdoor Recreation – Value-Added Contribution to the GDP

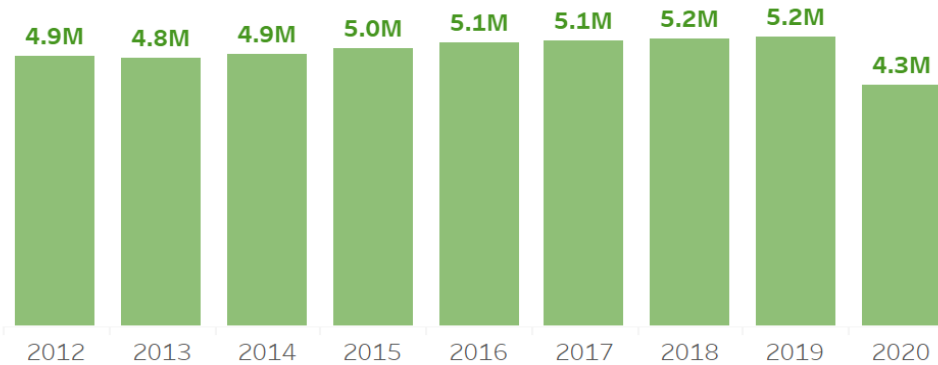
\$374 Billion

1.8% GDP

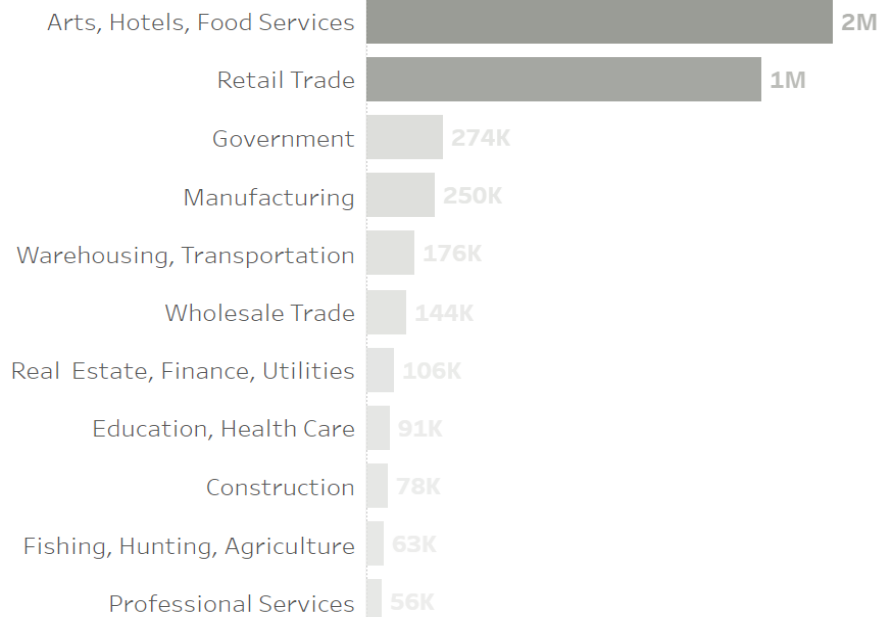
4,324,240 Jobs

2.9% Total Wage + Salary Employment

Jobs over time

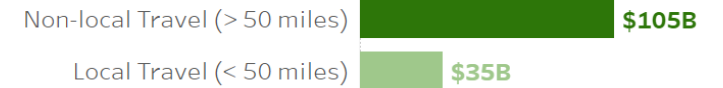


Jobs by industry in 2020

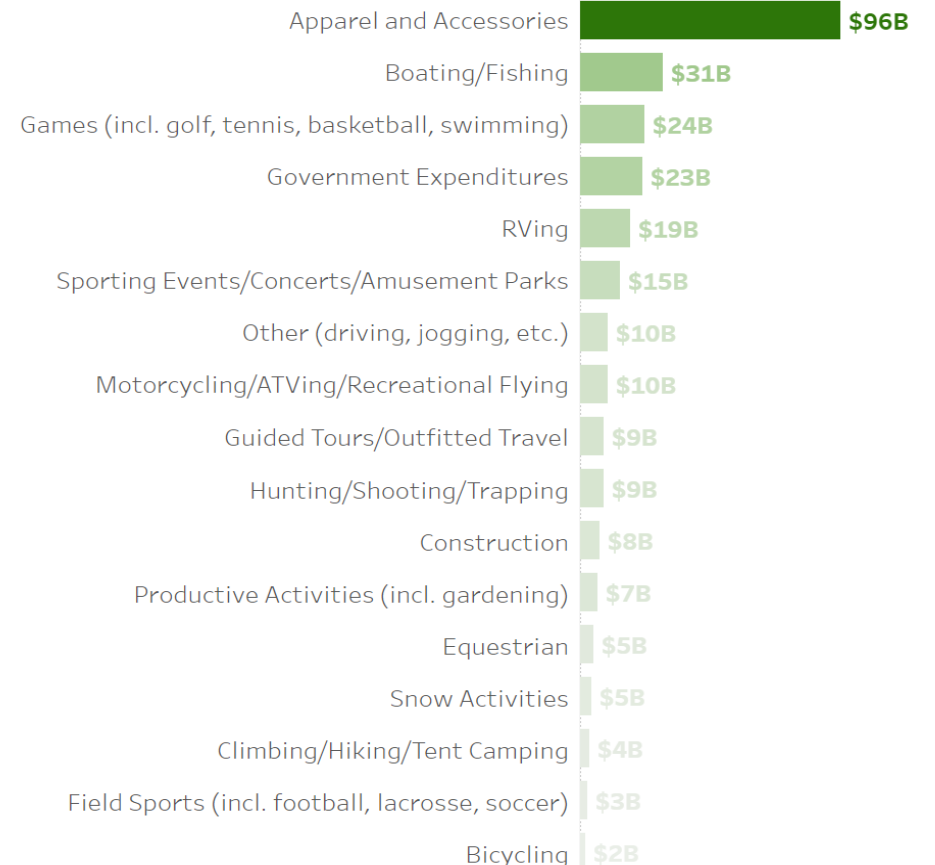


GDP contribution by activity in 2020

GDP from Outdoor Rec. Travel Activities:



GDP from All Other Outdoor Rec. Activities:



Source: Bureau of Economic Analysis, Outdoor Recreation Satellite Account and Regional Economic Accounts.

California

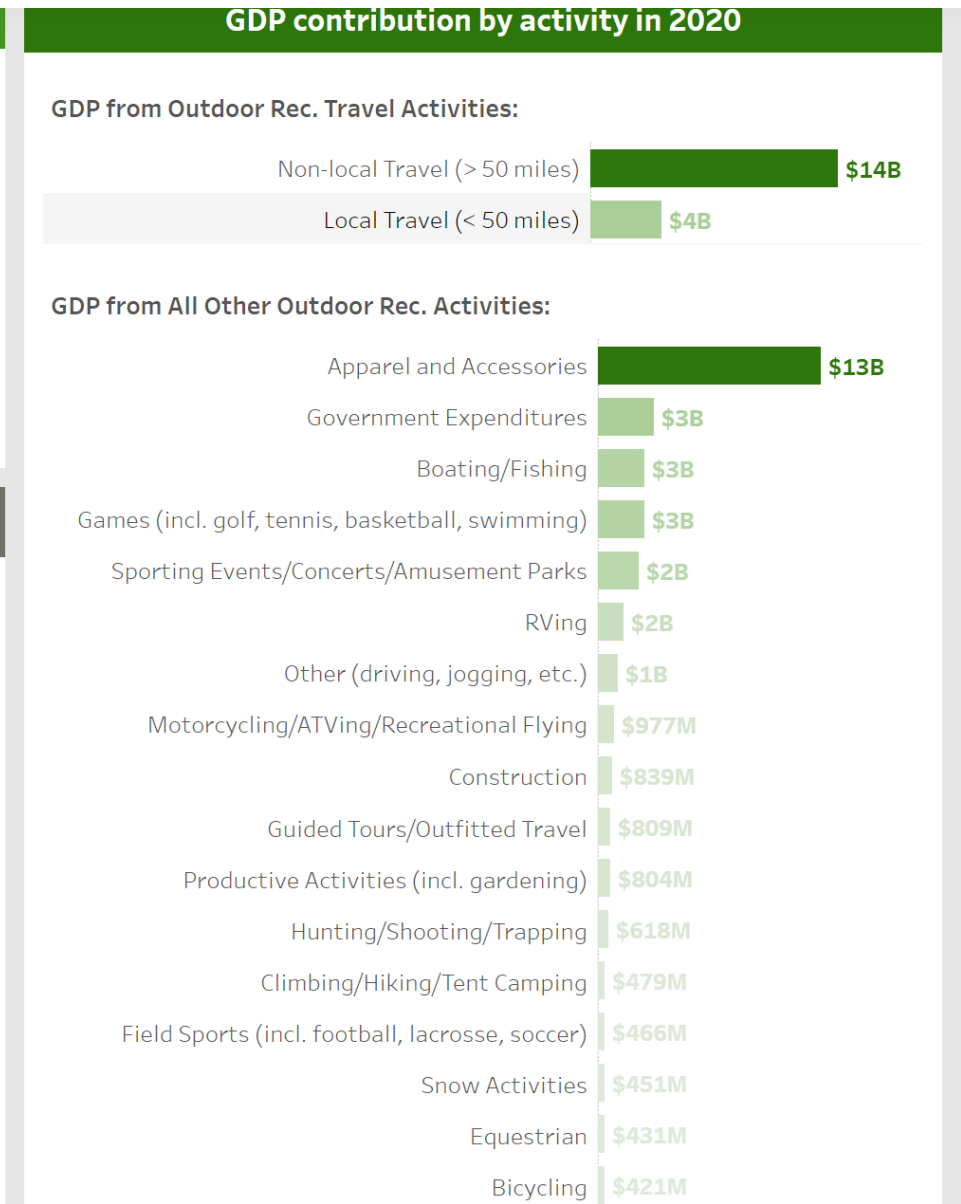
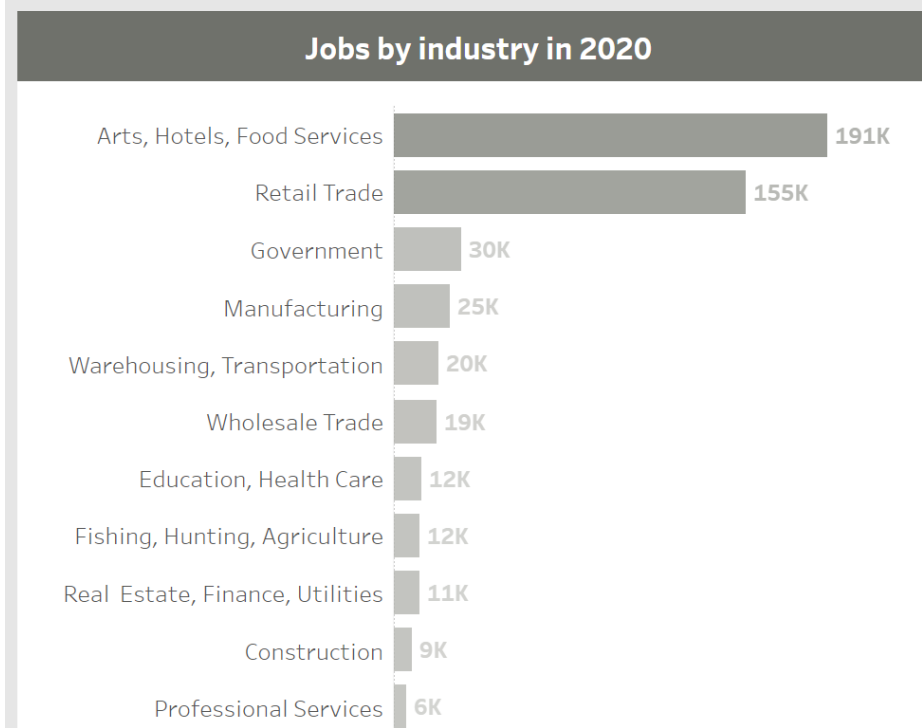
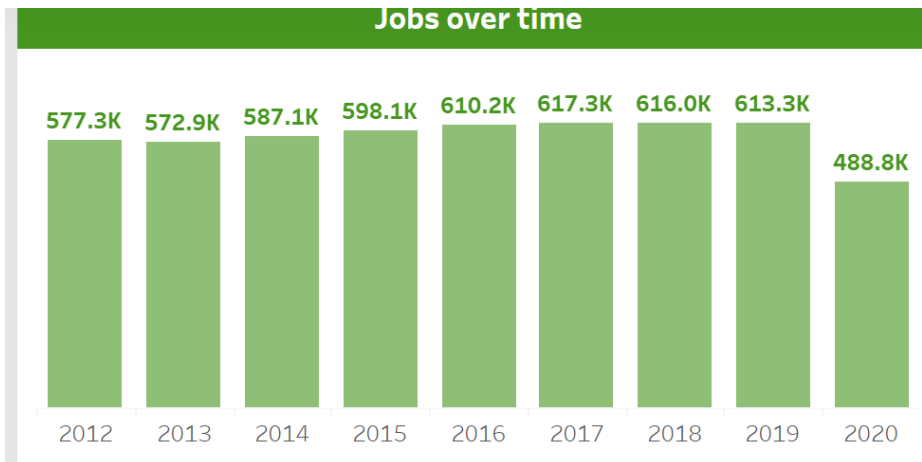
Outdoor Recreation – Value-Added Contribution to the GDP

\$44.5 Billion

1.5% GDP

488,755 Jobs

2.8% Total Wage + Salary Employment



Source: Bureau of Economic Analysis, Outdoor Recreation Satellite Account and Regional Economic Accounts.

Pitt Grewe, Director of the Utah Office of Outdoor Recreation, put it plainly:

"Say a community wants to be a mountain bike destination, there have to be residents in the town who are willing to get behind it and push it, and support the economic and recreation side of it. They are going to be the ones writing grants, talking to the town council. It makes all the difference when it comes from the community."

Pitt Grewe, Director of the Utah Office of Outdoor Recreation





BOB GARDNER

District 3 Supervisor

Mono County



Dispersed
Camping Update



Eastern Sierra Dispersed Camping Collaboration

Purpose: to build collective engagement for collaborative action *this summer* across the Eastern Sierra.

Need: #vanlife has come to the Eastern Sierra. While camping and Responsible Recreation are permitted and encouraged on Public Lands, this issue is complex and widespread.

Current Effort: A coalition of the willing coming together for triage - comprised of agency representatives from the U.S. Forest Service, Bureau of Land Management, City of Los Angeles Department of Water and Power, Mono County, the Town of Mammoth Lakes, non-profits, and concerned community members.



- Education
- Mapping
- Stewardship
- Infrastructure
- Enforcement & Policy

Education

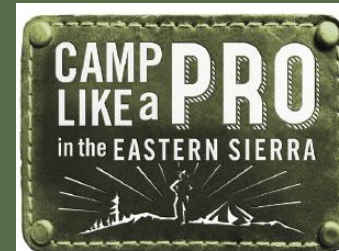
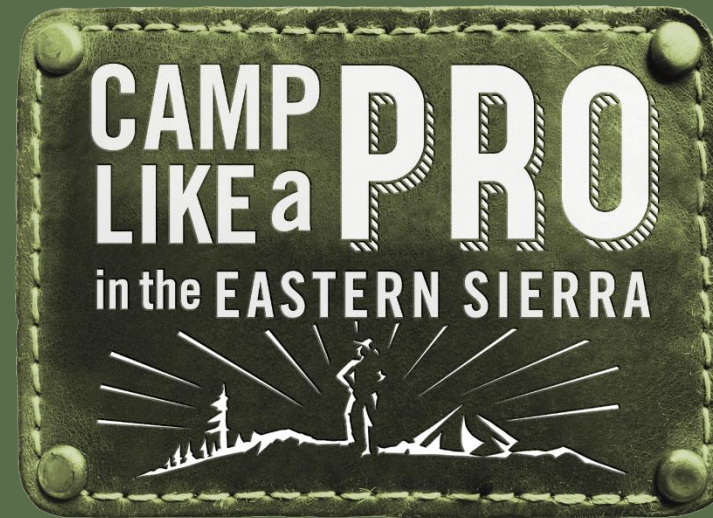
Purpose: To establish consistent, effective messaging that educates the public on responsible, safe Dispersed Camping practices and proactive stewardship of the Eastern Sierra.

“Camp Like a Pro” Branding & Messaging:

1. Stay in a designated campground
2. Campsite selection – essrp.org/camping (map)
3. Pack It In - Pack It Out
4. Fire Safety
5. Poo like a Pro
6. Be a good neighbor

Materials & Distribution:

- A. Printed rack cards – visitor contacts
- B. QR code – map/resources
- C. Toolkit with Social Media graphics/posts, images, and poster.
- D. Camp Like A Pro stickers
- E. Downloadable one-sheet – essrp.org/camping



PROS PREPARE. KNOW BEFORE YOU GO.

Facilities, availability and conditions vary. Access intel and maps at essrp.org/camping and know where you can and can't camp. Be prepared for extreme weather and emergencies —help may be a long way off, whether for a flat tire or a twisted ankle.

PRO CAMPSITE SELECTION

Established Campgrounds – With over 160 serviced campgrounds in Inyo and Mono counties, this is your best bet for a great camping experience that also preserves our pristine environment. Reserve your campsite at recreation.gov or reserveamerica.com.

Dispersed Camping – Venturing beyond established campgrounds (aka “boondocking”) means taking your camping responsibility to the next level.

- Choose an already-disturbed area at least 200 feet from lakes and streams.
- Store food (and trash!) in bear-proof food containers. Never leave food in your tent.
- Do not feed or approach wild animals. No selfie is worth it.
- Be kind to other campers. Give everyone their space.

PACK IT IN, PACK IT OUT.

Bring your own trash bags and take out ALL waste, including toilet paper, food scraps and pet waste. Pros leave their site better than they found it!

PRO CAMPFIRE SKILLS

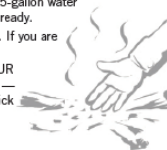
There's nothing between a campfire and a wildfire except YOUR SKILLS. Don't be the camping amateur that starts the big one.

• Get your mandatory California Campfire Permit at readyforwildfire.org/permits/campfire-permit/. Always check local fire restrictions.

• Prepare the area, have a 5-gallon water bucket and shovel at the ready.

• Tend your fire like a boss. If you are not watching it, douse it.

• KNOW HOW TO PUT YOUR FIRE COMPLETELY OUT — cold enough for you to stick your hand in the ashes. (Be careful testing it!)



POO LIKE A PRO

Your number 2 is a number one problem. Here's how to do-it right at an unserviced campsite.

- GO FAR. Set up your Pro Poo Zone at least 200 feet from your campsite and any water source.
- GO DEEP. Bury your waste at least 6 inches down. Always pack out your soiled toilet paper!
- GO PRO. Use 'wag bags' or a portable toilet.
- Remember to clean up after your pets, too.



MAPS & RESOURCES

SCAN THIS QR CODE for helpful visitor center and ranger station contact info.

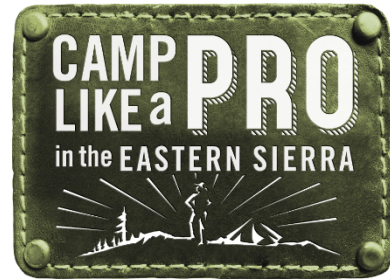
View the Interactive Camp Like a PRO Map: essrp.org/camping



THANKS FOR CAMPING LIKE A PRO.

California's Eastern Sierra

Education (continued)



PROS PREPARE. KNOW BEFORE YOU GO.

Facilities, availability and conditions vary. Access intel and maps at essrp.org/camping and know where you can and can't camp. Be prepared for extreme weather and emergencies — help may be a long way off, whether for a flat tire or a twisted ankle.

PRO CAMPSITE SELECTION

Established Campgrounds – With over 160 serviced campgrounds in Inyo and Mono counties, this is your best bet for a great camping experience that also preserves our pristine environment. Reserve your campsite at recreation.gov or reserveamerica.com

Dispersed Camping – Venturing beyond established campgrounds (aka “boondocking”) means taking your camping responsibility to the next level.

- Choose an already-disturbed area at least 200 feet from lakes, streams, wetlands and other natural water sources.
- Store food (and trash!) in bear-proof food containers. Never leave food in your tent.
- Do not feed or approach wild animals. No selfie is worth it.
- Be kind to other campers. Give everyone their space.

PACK IT IN, PACK IT OUT.

Bring your own trash bags and take out ALL waste, including toilet paper, food scraps and pet waste. Pros leave their site better than they found it!

MAPS & RESOURCES

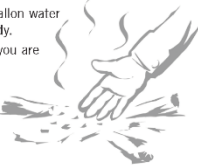
SCAN THIS QR CODE for helpful visitor center and ranger station contact info. View the Interactive Camp Like a PRO Map: essrp.org/camping



PRO CAMPFIRE SKILLS

There's nothing between a campfire and a wildfire except YOUR SKILLS. Don't be the camping amateur that starts the big one.

- Get your mandatory California Campfire Permit at readyforwildfire.org/permits/campfire-permit/. Always check local fire restrictions.
- Prepare the area, have a 5-gallon water bucket and shovel at the ready.
- Tend your fire like a boss. If you are not watching it, douse it.
- KNOW HOW TO PUT YOUR FIRE COMPLETELY OUT—cold enough for you to stick your hand in the ashes. (Be careful testing it!)



POO LIKE A PRO

Your number 2 is a number one problem. Here's how to do-do it right at an unserviced campsite.



- GO FAR. Set up your Pro Poo Zone at least 200 feet from your campsite and any water source.
- GO DEEP. Bury your waste at least 6 inches down. Always pack out your soiled toilet paper!
- GO PRO. Use “wag bags” or a portable toilet.
- Remember to clean up after your pets, too.

THANKS FOR
CAMPING LIKE A PRO.
California's Eastern Sierra



VISITOR CENTERS AND AREA INFO

EASTERN SIERRA INTER-AGENCY VISITOR CENTER
US-395 & CA-136, Lone Pine, CA 93545 • 760-876-6200
www.fs.usda.gov/recarea/inyo/recarea/?recid=20698

BUREAU OF LAND MANAGEMENT
351 Pacu Lane, Suite 100, Bishop, CA 93514 • 760-872-5000
www.blm.gov/office/bishop-field-office

BISHOP AREA CHAMBER OF COMMERCE & VISITOR CENTER
690 N. Main Street, Bishop, CA 93514 • 760-873-8405
www.bishopvisitor.com

INYO NATIONAL FOREST
White Mountain Ranger District
798 N. Main Street, Bishop, CA 93514 • 760-873-2500
www.fs.usda.gov/recarea/inyo/recarea/?recid=20230

Mammoth Lakes Ranger District/Mono Basin District
Mammoth Lakes California Welcome Center
2510 Main Street, Mammoth Lakes, CA 93546 • 760-924-5500
www.fs.usda.gov/detail/inyo/recreation/?cid=stelpdrb5403315

Mono Basin Scenic Area Visitor Center
Lee Vining Creek Trail, Lee Vining, CA 93541 • 760-647-3044

MONO LAKE COMMITTEE INFORMATION CENTER & BOOKSTORE
US-395 at 3rd Street, Lee Vining, CA 93541 • 760-647-6595
www.monolake.org

HUMBOLDT TOIYABE NATIONAL FOREST
Bridgeport Ranger District
US-395 south of Bridgeport, CA 93517 • 760-932-7070
www.fs.usda.gov/detail/htn/about-forest/districts/?cid=fsprdr754240

MAMMOTH LAKES TOURISM
2510 Main Street, Mammoth Lakes, CA 93546 • 888-466-2666
www.visitmammoth.com

MONO COUNTY TOURISM
Mono County • 800-845-7922
www.monocounty.org



THANKS FOR CAMPING LIKE A PRO.
California's Eastern Sierra

ROAD & WEATHER REPORTS

CALIFORNIA ROADS / CALTRANS
800-427-7623
www.dot.ca.gov

Seasonal Road Closures
Due to winter snowfall at higher elevations, the following mountain passes are closed from approximately mid-November to mid-May, depending on snow:
SR-120 (Tioga Pass into Yosemite)
SR-108 (Sonora Pass)
SR-89 (Monitor Pass)

Mono County Roads
760-932-5440 • www.MonoCounty.ca.gov/roads
County road conditions for Benton Crossing, Cottonwood Canyon, Lundy Lake, Virginia Lakes, Rock Creek, Saddlebag Lake and Twin Lakes (Bridgeport) roads.

National Weather Service
www.Noaa.gov

MEDICAL

Mammoth Hospital
Sierra Park Road, Mammoth Lakes, CA 93546
760-934-3311 • www.MammothHospital.org

Northern Inyo Hospital
address, Bishop, CA
760-873-5811 • www.NIH.org

EMERGENCIES DIAL 911

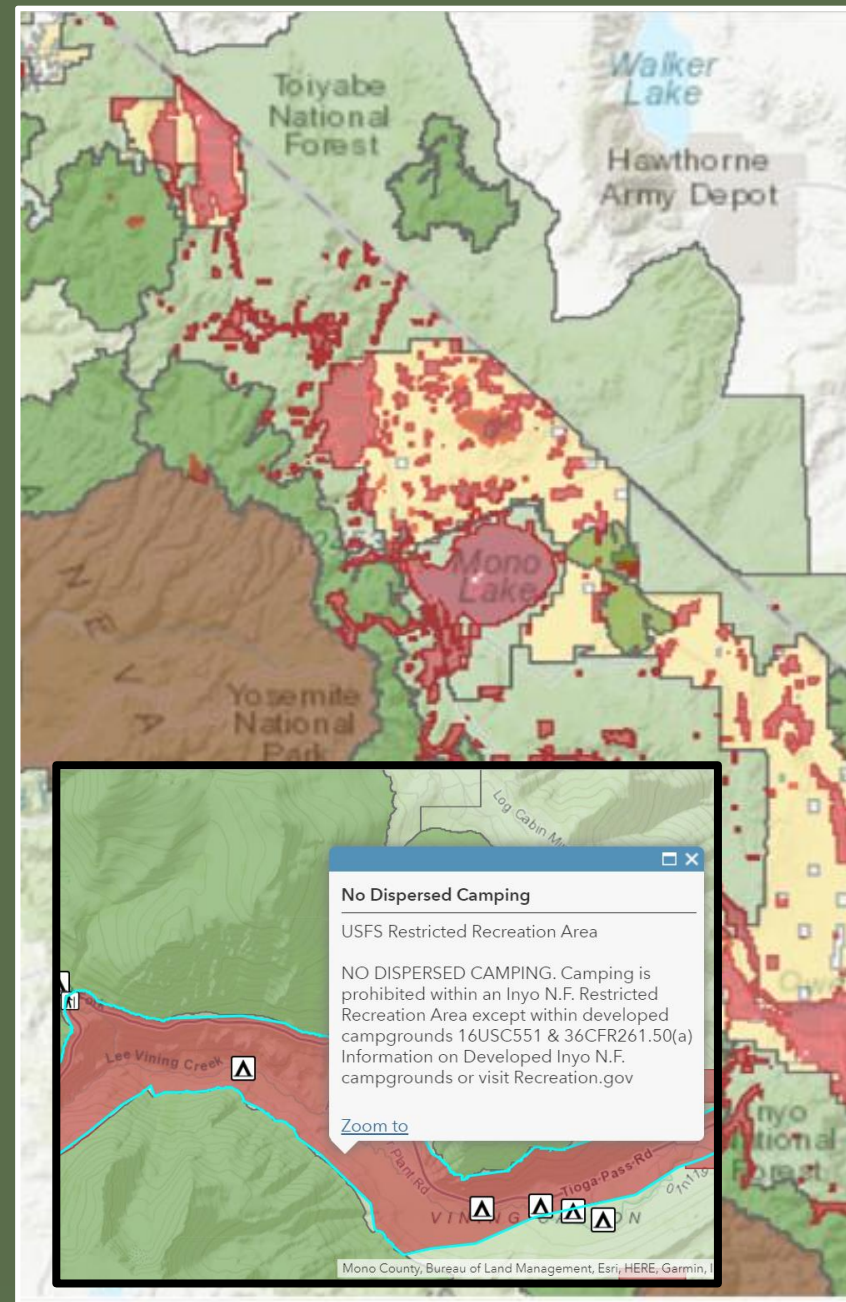
Medical – Fire – Police – Sheriff
Search and Rescue

Mapping

Purpose: To produce mapping product(s) for internal (agency) and external (public) use that support education, enforcement, stewardship, and infrastructure & promote responsible rec.

Efforts focused on developing a GIS digital map resource that:

- Directs users to existing private and public campgrounds, visitor centers, RV dump-sites, and other amenities.
- Provides a visual representation of *current* land management policy (where dispersed camping is prohibited).
- Represents land management units.
- Provides education tools & links to agency-managed websites, required permits, and other important alerts & notices.



Stewardship

Purpose: To enhance education, management presence and restoration through partnerships.

Efforts focused on compiling an inventory of existing group assets and community resources to enable improved management by agencies and the public.

1. Collective Volunteer Events Calendar – [VolunteerEasternSierra.org](https://www.volunteereasternsierra.org).
2. Listing of agency and group contacts to get involved.
3. *Need enhanced bridge between people willing to work and agency staff*



Infrastructure

Purpose: To identify existing locations and additional facilities for expanded seasonal availability of recreational infrastructure and signage that addresses Dispersed Camping issues.

Efforts focused on:

1. Temporary infrastructure: placement and sponsorship – MLR!
2. Signage placement and maintenance – Forest, County, Town, FOI, land managers, local groups and citizens – partners and volunteers



**MAMMOTH LAKES
RECREATION**

mammothlakesrecreation.org/camping

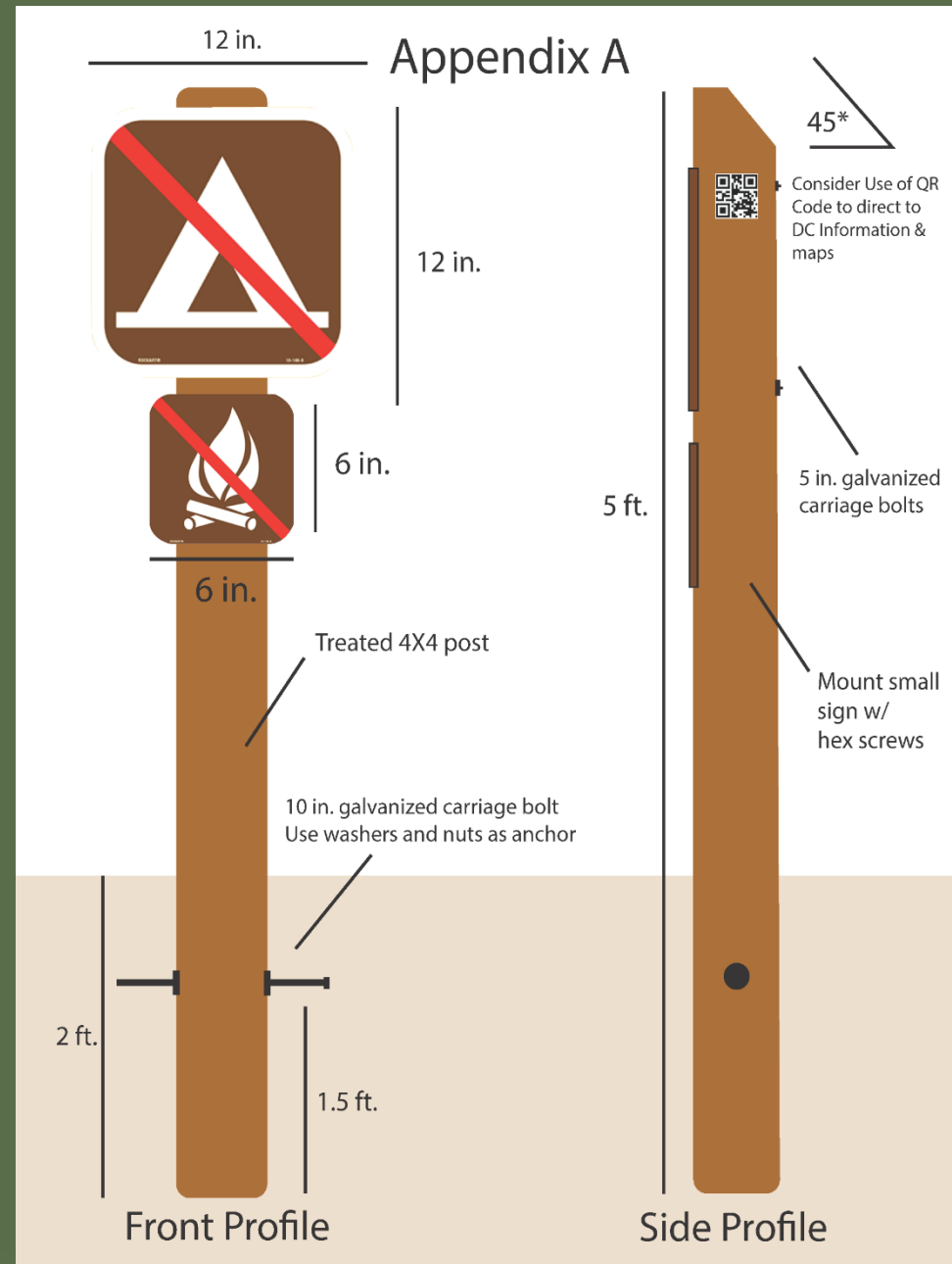
Infrastructure

(cont.)

Purpose: To identify existing locations and additional facilities for expanded seasonal availability of recreational infrastructure and signage that addresses Dispersed Camping issues.

Efforts focused on:

1. Temporary infrastructure: placement and sponsorship – MLR!
2. Signage placement and maintenance – Forest, County, FOI, Town, land managers, local groups, partners & volunteers.



Example regulatory signage – metal, carsonite, message boards, etc.

Enforcement & Policy

Purpose: To increase enforcement presence and effectiveness.

1. Enhanced County Code language -
Paved County Roads - *DRAFT*
2. Capacity challenges
3. Enhanced communication
4. Importance of map and signage
5. One point of contact – Sheriff
Dispatch
6. Targeted efforts & actions at focus
areas

To report a violation

Contact Mono County Sheriff's
dispatch:

760.932.7549 Ext. 7

Emergencies Dial 911



Next Steps & Future Planning:

- Permitting, Fee Structure?
- New host/ambassador programs?
- Static maps, kiosks & brochures?
- **Be the solution**
 - ✓ Camp like a pro
 - ✓ Spread the word
 - ✓ Support temporary infrastructure
 - ✓ Give back to the land
 - ✓ Contact the agencies

For further information, please visit
essrp.org/camping



Dispersed Camping Collaboration Contact:
Paul McFarland – dechambeaucreekfdn@gmail.com
Matt Paruolo – mparuolo@mono.ca.gov

Pledge Programs

Various local government and other initiatives that encourage visitors/residents to commit to responsible recreation behavior and practices

- Leave No Trace
- Aspen Pledge
- Bend Pledge
- Traveler Responsibility Pledge
- The Mahoosuc Way
- Pledge for the Wild
- Mt. Washington Valley Pledge
- Adventure by Nature Pledge
- Tread Lightly
- Pledge to Travel Green
- Wilderness Tourism Assn. Pledge
- Paradise Pledge
- Yellowstone Pledge

Leave No Trace

The Seven Principles

- Plan ahead and prepare
- Travel and camp on durable surfaces
- Dispose of waste properly
- Leave what you find
- Minimize campfire impacts
- Respect wildlife
- Be considerate of others

Leave No Trace

Sponsor: Leave No Trace

- The Seven Principles of Leave No Trace provide an easily understood framework of minimum impact practices for anyone visiting the outdoors.
- Although Leave No Trace has its roots in backcountry settings, the Principles have been adapted so that they can be applied anywhere — from remote wilderness areas, to local parks and even in your own backyard.
- Each Principle covers a specific topic and provides detailed information for minimizing impacts.
- The Seven Principles are well established and widely known, but they are not static.
- They also apply to almost every recreational activity.
- Leave No Trace continually examines, evaluates and reshapes the Principles.
- The organization's Education Department conducts research — including publishing scholarly articles in independent journals — to ensure that the Principles are up to date with the latest insights from biologists, land managers and other leaders in outdoor education.
- Information at <https://lnt.org/>.

Aspen, CO Pledge

Whether Aspen is my home sweet home, or my home away from home:

- I will explore responsibly.
- I will prepare for any experience.
- I will find adventure, but not venture off the marked trails.
- I will carve the snow and not the trees.
- I will get lost in my thoughts, but not in the woods.
- I will remain in one piece by leaving the wildlife in peace.
- I will go sightseeing while leaving the sites worth seeing.
- I will travel by foot, bike, or bus when I can, and drive carefully when I cannot.
- I will honor the history and heritage of those who were here before me and preserve the land for those who come after me.
- I will accept our differences and celebrate our diversity.
- I will be kind to community members of every kind.
- I pledge to take care of this little place called Aspen.

Aspen, CO Pledge

Sponsor: Aspen Chamber Resort Association (ACRA)

- Aspen is an inspiration. A community. A home. To not just extraordinary individuals, but to extraordinary natural spaces and wildlife.
- Here, ideas and art and progress are made possible by the endless inspiration found in nature. Here, our community is defined by all those who defy ordinary every single day.
- So take the Aspen pledge and commit to helping Aspen's beautiful and unique community flourish for years to come.
- ACRA will be making a donation of \$18.80 for each pledge signed, which honors the year Aspen was incorporated, 1880.
- Those signing the pledge can choose between the Independence Pass Foundation and Roaring Fork Outdoor Volunteers as the beneficiary organization.
- For the initial launch, ACRA has committed up to \$50,000 in donations.
- Information at <https://aspenchamber.org/pledge>

Bend, OR Pledge

1. Smile, say please & thank you, give right-of-way, and simply slow down
2. Adventure and explore in a manner that is respectful to the land, wildlife, and the people you share it with.
3. Plan and prepare for your time on the trails, in the mountains and on the water.
4. Walk more, drive less, and stick to established trails, routes, and parking areas.
5. We must take care of the places that take care of us; we are all visitors here.

Bend, OR Pledge

Sponsor: Visit Bend

- Bring your best self to Central Oregon and take care of the places that take care of us.
- Take the Bend Pledge and join us in protecting the places we love to play; treading softly, taking only memories, and leaving only footprints.
- Take the Pledge to leave Bend better than you found it and enter to win a dream vacation to Bend at the same time.
- The Bend Pledge is our way of asking you to “Bring your best self” when spending time in Central Oregon
- Sign the Pledge not only because it’s the right thing to do, but also because you could win a free Bend Vacation.
- Take the Bend Pledge today and you could win one of two Bend vacations including lodging, meals, and activities. We draw one random pledge each quarter, so you’ve always got another chance to be a winner.
- Information at <https://www.visitbend.com/the-bend-pledge/>

Traveler Responsibility Pledge

Take the Pledge:

- Become a steward of Lake Tahoe
- Respect the environment
- Stay educated
- Keep wildlife wild
- Be fire safe
- Demonstrate mindful travel

Traveler Responsibility Pledge

Sponsor: North Lake Tahoe

- The magic of Lake Tahoe lies in the culture of our communities and the natural beauty that surrounds us.
- Before embarking on a journey to our beloved region, please take the Traveler Responsibility Pledge.
- We appreciate your commitment to preserving the natural wonders of the Sierra.
- Share the pledge with your friends and family to help spread the word.
- Information at <https://www.gotahoenorth.com/sustainable-travel-pledge/>.

The Mahoosuc Way

Pledge to embrace our place:

- Honor this land
- Explore wisely
- Show respect
- Cultivate community
- Be climate conscious

The Mahoosuc Way

Sponsor: Bethel, ME area Chamber of Commerce

- This pledge has been created by a core group of local organizations, together with statewide partners.
- Together, we are committed to creating a sustainable travel destination and ensuring we preserve local quality of life and community vitality.
- This pledge is part of our commitment to ensure these lands and ecosystems are able to be enjoyed for generations to come.
- The Embrace Our Place pledge helps us communicate our community values to newcomers and visitors.
- At the heart of our values, is a desire for a collective action to ensure we preserve this unique place.
- By offering the Embrace Our Place pledge, we are inviting you to be part of our shared experience here in the Mahoosuc Region.
- We can all play our part, and the collective sum of our actions will shape our future.
- We invite you to embrace our communities and way of life, today and into the future.
- Information at <https://mahoosucway.com/>.

Pledge for the Wild

Communities:

Asheville, North Carolina
Aspen, Colorado
Bend, Oregon
Columbia River Gorge, Oregon/Washington
Durango, Colorado
Flagstaff, Arizona
Juneau, Alaska
Ogden, Utah
South Lake Tahoe, California/Nevada
Sun Valley, Idaho
Whitefish, Montana

Pledge for the Wild

What is Pledge for the Wild?

- Pledge for the Wild is a way for you to give back to the places and spaces that give you so much!
- By making a donation to Pledge for the Wild, you are making a tax-deductible contribution to local nonprofit organizations that invest in the protection, stewardship and sustainability of the places and spaces that make these communities so special.
- By making a Pledge for the Wild, you are helping to build trails, provide river access, protect habitat and create urban parks and bike infrastructure.
- Whether you're just traveling through or frequenting your favorite local adventure spots, we encourage you to take pause and consider who supports and cares for these wild places day-to-day.
- Trails don't build themselves; they need help from each of us!
- As an outdoor community, we are working to promote responsible and sustainable travel and recreation.
- Information at <https://www.pledgewild.com/>.

Mt. Washington Valley Pledge

Take the MWW Pledge:

- I pledge to plan ahead and be prepared
- I will treat others with kindness and respect
- I will trash my trash
- I will keep the wildlife wild
- I will stick to the trails
- I will take only pictures, and leave only footprints
- When nature calls, I will respect nature
- I will camp responsibly
- I will share the outdoors
- I will protect the waterways

Mt. Washington Valley Pledge

Sponsor: Mt. Washington Valley, NH Chamber of Commerce

- Created by the chamber in 2020, the pledge is a ten-principle responsibility code that is a hybrid of the:
 - Icelandic Pledge, implemented and perpetuated by the eco-savvy tourism bureau in Iceland;
 - The seven Leave No Trace Principles, a well-known list on how to behave when recreating in the outdoors; and
 - The Granite State Promise, a credo on safe, and responsible travel to New Hampshire.
- Visitors and locals alike are encouraged to visit www.mwvpledge.com, and sign their name to the pledge, and promise to preserve and protect the White Mountains, and its natural resources so we can protect it for years to come
- It's the MWVCC's hope to spread this messaging far and wide to help reinforce outdoor etiquette, responsible tourism, and sustainable environmental practices.
- More information at <https://www.visitmwv.com/pledge>

Adventure by Nature Pledge

While Traveling in Buena Vista and Salida (or other cities/towns), Colorado, I will:

- Stay on the trail
- Be respectful
- Recreate responsibly
- Leave no trace

(Sign Online)

Adventure by Nature Pledge

Sponsor: Chaffee County Visitors Bureau

- The Adventure By Nature Pledge is an education project that asks visitors and residents to recreate responsibly while enjoying the outdoors.
- When you visit Buena Vista & Salida, Colorado you'll feel a special connection with our natural resources and the environment.
- Our community welcomes all who come here to embrace the Adventure By Nature Pledge.
- By taking the Adventure By Nature Pledge, you help us protect and preserve our home and public lands by recreating responsibly in the outdoors.
- The Chaffee County Visitors Bureau says that it believes that stewardship of the environment is everyone's responsibility.
- They are asking visitors and community members to help them protect and preserve the county so future generations can enjoy it.
- As a way of saying thanks for pledging to care for our public lands and recreate responsibly, participants will receive a free Discovery Pass.
- Your support allows future generations the ability to enjoy it just as you have.
- Information at <https://www.colorfulcolorado.com/take-the-pledge/>

Tread Lightly!

Tread Principles:

- Travel responsibly
- Respect the rights of others
- Educate yourself
- Avoid sensitive areas
- Do your part

Tread Lightly!

Sponsor: Tread Lightly! Inc.

- Tread Lightly! and its partners lead a national initiative to protect and enhance recreation access and opportunities by promoting outdoor ethics to heighten individuals' sense of good stewardship.
- Tread Lightly!'s goal is to balance the needs of the people who enjoy outdoor recreation with our need to maintain healthy ecosystems and thriving populations of fish and wildlife.
- We also have a niche in promoting safe and responsible use of motorized and mechanized vehicles in the outdoors.
- The scope of our work includes both land and water, and is representative of nearly every form of outdoor recreation including, but not limited to hunting, recreational shooting, fishing, and boating.
- We offer a myriad of programs, trainings, and educational material to help educate recreationists across the nation on the importance of treading lightly.
- Information at <https://treadlightly.org/learn/>

Pledge to Travel Green

The US Travel Care Code:

- Learn about your destination
- Don't leave your good habits at home
- Be a fuel-efficient traveler
- Make informed decisions
- Be a good guest
- Support locals
- Dispose of your waste properly
- Protect your natural environment
- Make your travel zero emissions
- Bring your experiences home

Pledge to Travel Green

Sponsor: University of Colorado Club Sports

- The US Travel Care Code is a list of ten simple action items thoughtfully researched and designed to provide travelers with information on how they can reduce the negative impact of their travel and visitor related activities.
- It is available online for free use and replication.
- The Code was developed by graduate students, faculty and staff at the Center for Sustainability at East Carolina University in partnership with Miles Media Inc.
- The Club Sports program at CU is continuously making conscious efforts to diminish the program's impact on the environment.
- We know little about our greenhouse gas production and its impact on the community around us.
- We are suggesting you don't leave your good habits at home when you travel and that you support the Pledge to Travel Green initiative.
- Now is an ideal time to take action to protect our environment and make changes in how we travel and how we host those who are traveling to us to participate in games, matches, and retreats.
- Information at <https://travelcarecode.org/>

Wilderness Assn. of British Columbia Visitor Pledge

Simple Steps with Huge Impact:

- I will leave the wilderness as I found it
- I will respect indigenous and local cultures
- I will respect the wildlife I encounter
- I will be inquisitive about the wilderness
- I will support the locals
- I will follow my hosts instructions
- I will help my fellow travelers remember these pledges

Wilderness Tourism Assn. Pledge of BC

Sponsor: Wilderness Tourism Assn. of British Columbia

- The WTABC has developed a Visitor Pledge to help our members communicate to guests the importance of respecting the places they will be visiting during their trip.
- This pledge is free to download and share with your guests.
- If you have a companion piece specific to your organization let us know.
- This is a living document and we will continue to improve it with the ongoing feedback from WTABC members, industry partners and other stakeholders working to protect the incredible environments we operate within.
- Information at <https://wilderness-tourism.bc.ca/members/resources-services/>

Paradise Pledge

When exploring I will:

- Be kind and respectful of others.
- Practice the principles of Leave No Trace.
- Learn how to poop in the woods.
- Understand that wildlife are wild.
- Be bear aware and carry bear spray.
- Restrain and clean up after my pets.
- Be respectful of private property.
- Follow trail etiquette and use guidelines.
- Drive with consideration of others and watch out for wildlife!

When on the river I will:

- Learn about Montana's Stream Access Law.
- Be able to identify the ordinary highwater mark.
- Avoid crowding the boat ramp.
- Give others plenty of room.
- Practice Clean, Drain, Dry.
- Comply with FWP's regulations and buy a fishing license!

Paradise Pledge

When camping I will:

- Camp in established sites.
- Be mindful of local fire restrictions and wildfire risks.
- Store food safely away from bears and wildlife.
- Keep a tidy camp.
- Enjoy the quiet and solitude.
- Leave my campsite cleaner than I found it.

When in Yellowstone National Park I will:

- Familiarize myself with Park rules and guidelines.
- Be patient and mindful of other visitors.
- Keep a safe distance from wildlife and geothermal areas.
- Follow all COVID-19 guidelines.
- Take the Park's Yellowstone Pledge.

Paradise Pledge

Sponsor: Park County, MT Environmental Council

- The Paradise Pledge is meant to be a “handshake agreement” acknowledging respectful outdoor practices that for some of us are second nature, but for many new to the area, or just visiting, might not be so obvious.
- As we see more and more people visit Park County, we felt it was important to raise awareness about how to interact with the trails, rivers, and landscape all around us.
- We have heard from many in the community of the need to create more awareness around responsible outdoor recreation, and we felt this was a good way to start getting the word out.
- Leave No Trace. Clean. Dry. Drain. Be Bear Aware. Recreate Responsibly. We pulled all of these best practices and resources together to create a pledge that is tailored to our unique community, environment, and recreational opportunities.
- The Paradise Pledge was created by PCEC staff, with input from stakeholders across Park County, with assistance from the National Parks Conservation Association.
- Information at <https://www.pcecm.org/stories/introducing-the-paradise-pledge>

Yellowstone Pledge

“I pledge to protect Yellowstone National Park. I will act responsibly and safely, set a good example for others, and share my love of the park and all the things that make it special.”

- Give wildlife room, use a zoom.
- Follow the beaten path.
- Be bear aware.
- Watch out for water.
- Practice safe selfies.
- Enjoy the ride.
- Leave your drone at home.
- Clean, drain, dry.
- Stash your trash.
- Leave what you find.

Yellowstone Pledge

Sponsor: Yellowstone National Park

- Visitors and supporters can help protect the park and themselves, and help others do the same, by taking the Yellowstone Pledge.
- The pledge is a personal promise that anyone can make anywhere, to be their best selves within the park's limits – to protect its hot springs, recycle, give animals their space, and do whatever else is necessary to preserve the beauty of Yellowstone.
- Take care of the places that take your breath away.
- The National Park Service works hard to protect Yellowstone and we need your help. The best way to start is by taking the Yellowstone Pledge.
- It's a personal promise you make to yourself and the park. It can be taken anywhere: it doesn't need to be taken out loud or in front of anyone. Tag #YellowstonePledge and encourage others to do the same.
- Information at <https://www.nps.gov/yell/planyourvisit/yellowstonepledge.htm>



THANK YOU!

Bob Gardner, Mono County, CA Supervisor

Phone

909-325-0999

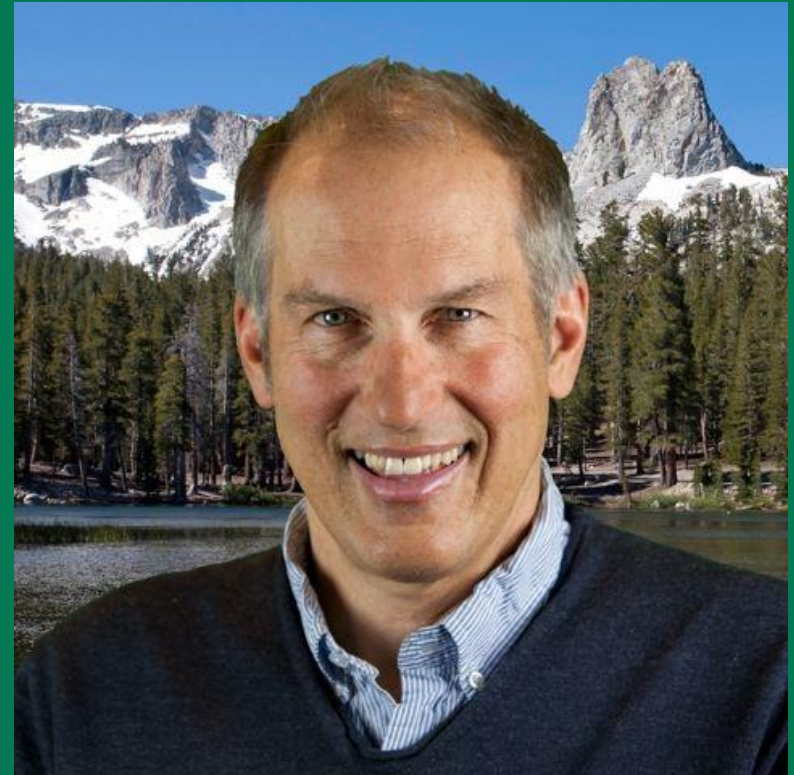
Email

bgardner@mono.ca.gov

JOHN WENTWORTH

Mayor Pro Tem

Town of Mammoth Lakes



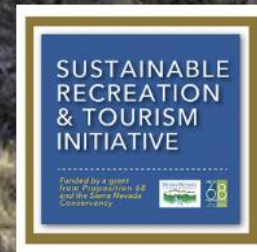
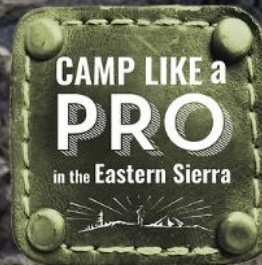
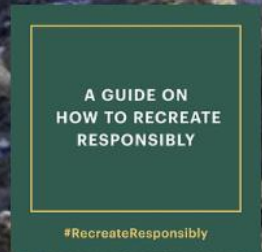
Sign up to stay informed about the *Eastern Sierra Sustainable Recreation Partnership*

SIGN ME UP!



THE EASTERN SIERRA SUSTAINABLE RECREATION PARTNERSHIP

A UNIQUE PUBLIC/PUBLIC PARTNERSHIP BETWEEN THE UNITED STATES FOREST SERVICE AND LOCAL AGENCIES



A REPLICABLE SUSTAINABLE RECREATION PROGRAM IN CALIFORNIA'S MAGNIFICENT EASTERN HIGH SIERRA



“A public/public partnership between tribal, local, state, and federal government agencies and a regional voice for sustainable outdoor recreation in California.”

Partner Updates in Alphabetical order

- Alpine County
- Bureau of Land Management
- CALTRANS
- City of Bishop
- Humboldt Toiyabe NF, USFS
- Inyo County
- Inyo National Forest, USFS
- Mono County
- National Park Service
- Town of Mammoth Lakes





Mariposa County, CA

- Rosemarie Smallcombe, Supervisor

HUMBOLDT-TOIYABE

*National
Forest*

**Bridgeport Ranger District, Humboldt
Toiyabe NF**

- **Megan Mulowney, District Ranger**

Welcome



Mt. Whitney Ranger District, Inyo NF

- Julie Hall, District Ranger

Welcome



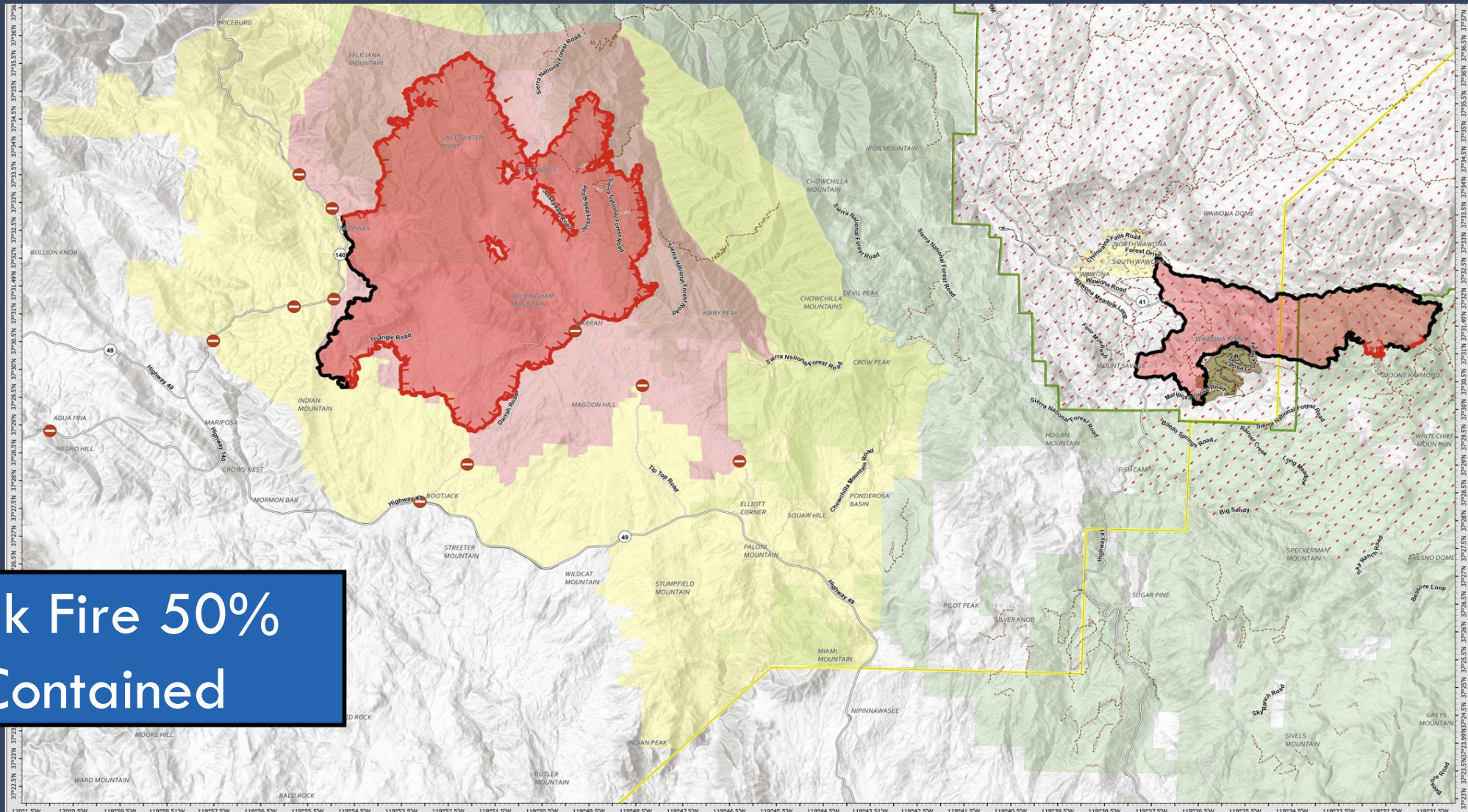
Manzanar NHS, National Park Service

- Brenda Ling, Superintendent

Situations / Awareness: Wildfires & Fires



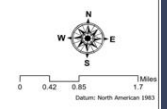
Situations / Awareness: Wildfires & Fires



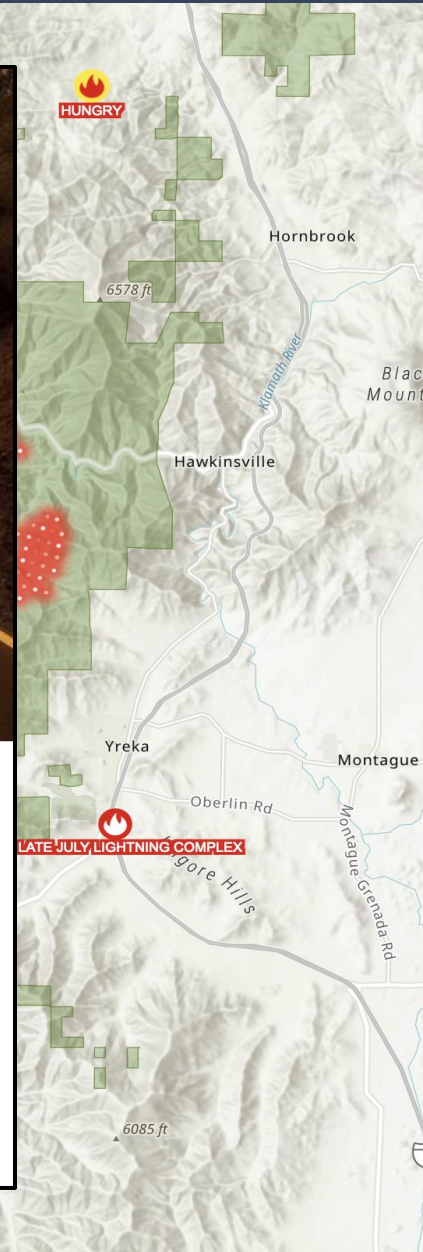
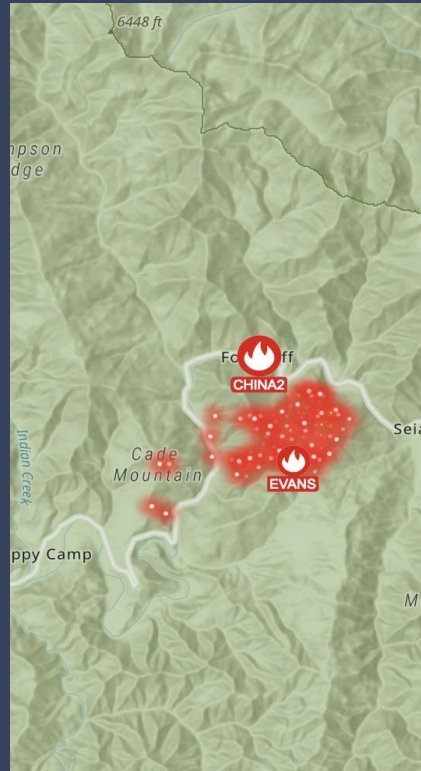
Oak Fire 50% Contained

Washburn
 CA-YNP-000038
 7/27/22 0700
 4,881 acres
 IR updated 7/25/2022 2207

Fire Perimeter Status		Evacuation Warning		Mariposa Grove		Uncontained	
	Contained		Evacuation Warning		Mariposa Grove		Uncontained
	Uncontained		Evacuation Order		Yosemite NP		Uncontained
	Washburn Fire		Road Closed		Sierra NF		County Boundary
			Area Closures		County Boundary		Contained



Situations / Awareness: Wildfires & Fires



McKinney and China 2 Fire

FIRES

Two dead found inside vehicle in Northern California's McKinney Fire zone, officials say

The bodies were found inside a burned out vehicle in the driveway of a home.

SHACKLEFORD

Two California fires in the Sierra Nevada have very different outcomes. Why?

By Alex Wigglesworth Staff Writer • July 30, 2022 5 AM PT



Firefighters douse hot spots in a scorched and ash-filled area of forest that burned recently in near Mariposa.

(Luis Sinco / Los Angeles Times)

#RecreateResponsibly

**WORKING TOGETHER
TO CARE FOR THE
PLACES WE PLAY**



UNITED SHADES OF AMERICA
W. KAMAU BELL

W. Kamau Bell: I'm living in a state that's on fire



Opinion by **W. Kamau Bell**

🕒 Updated 4:41 PM ET, Thu July 28, 2022



Source: CNN





Inside the FS

From the Chief's Desk

[Delivering the mission](#)

[Operation Care and Recovery](#)

Interim policy changes for partnership and cooperator agreements

July 22, 2022

Today I issued interim policy direction that makes it easier for existing and potential partners and cooperators to work together with the Forest Service to achieve mutually beneficial goals. (Read my letter and related attachments at the end of this article.) Specifically, I am directing broad inclusion of values partners bring to the relationship when determining how and when match requirements in partner agreements are met; removing the policy requirement for “substantial cash contributions;” and identifying a process to reduce, and in some cases waive, match requirements that are not statutorily required.

For decades, the Forest Service has known we can’t succeed alone. Today, climate-driven stressors and disturbances such as drought, wildland fire and insect epidemics know no boundaries. Recognizing that we, as land managers and landowners, are all in this together, the Forest Service and our partners have long worked collaboratively across shared landscapes to reach our mutual goals.



Chief Randy Moore

THE WHITE HOUSE



MENU



BRIEFING ROOM

FACT SHEET: Biden-Harris Administration Launches Effort to Create More Affordable and Equitable Outdoor Recreation Opportunities

JULY 21, 2022 • STATEMENTS AND RELEASES



Tf

Mid-July 2022 Heat Wave

Notable Daily Record High Temperatures set between Sunday, July 17 and Wednesday, July 20, 2022

	Temp(°F)
Abilene, TX (July 18-20)	110**
Salt Lake City, UT (July 17)	107**
Oklahoma City, OK (July 19)	110*
Stillwater, OK (July 19)	112
Dallas/Ft. Worth, TX (July 19-20)	109
Glasgow, MT (July 17)	108
El Paso, TX (July 19-20)	107, 108
Amarillo, TX (July 19)	108
Austin, TX (July 19-20)	106
Lubbock, TX (July 18)	104
San Antonio, TX (July 20)	104
Billings, MT (July 17)	103
Albuquerque, NM (July 19)	102
Denver, CO (July 18)	100
Cheyenne, WY (July 18, 20)	99, 100



San Francisco Chronicle

SFCHRONICLE.COM | Sunday, July 24, 2022 | CONTAINS RECYCLED PAPER | \$8.00 *****

"It affects everybody, that lake — we all live around it. Hopefully we'll live to see more water."

Marianne Denny, 40-year resident of the basin



Photos by Carlos Avila Gonzalez / The Chronicle

Limestone spires known as tufa towers at Mono Lake are illuminated by the moon outside Lee Vining (Mono County).

Mono Lake drying up as drought intensifies

Emblem of state's wild beauty faces reckoning

By Kurtis Alexander

LEE VINING, Mono County — The few who live along the shores of Mono Lake are accustomed to the peculiarities of this high desert basin.

Famously strange limestone spires known as tufa towers rise from the water. The lake contains so much salt that it's barren of fish. In the arid sands beyond, sagebrush thrives, and that's about it.

But the alkali flats that are emerging from the lake's surface, ghost white, aren't just another nod to the uniqueness of this ancient place. They're a sign of trouble. Amid a third year of drought, the sprawling lake on the remote east side of the Sierra Nevada is sharply receding, and the small towns and wildlife so closely tied to the water are feeling the pinch.

Already, parts of the lake popular **Mono Lake continues on A17**

A family checks out the widening shoreline at Mono Lake. As the gauge indicates, the water level has been receding in recent years as California faces one of its most severe, prolonged droughts.

Receding: Water levels dropped since Los Angeles began diverting water from Mono Lake's creeks. A chart shows water levels from 1940 to 2020. **A17**

Militia member wanted to start civil war

Oakland killing exposed dangers of 'boogaloo's'

By Joshua Sharpe

Steven Carrillo slid open the van door and readied his rifle, equipped with a silencer.

Carrillo, 32, a member of a far-right anti-government militia, aimed for two federal building guards in downtown Oakland. It was four days after George Floyd's murder in Minneapolis in May 2020. Carrillo hoped what he was about to do would be blamed on nearby Black Lives Matter protesters.

Carrillo pulled the trigger, firing 19 rounds from his AR-15-style rifle. One security officer fell, dying.

Days later, Carrillo, an active-duty U.S. Air Force sergeant, would also allegedly ambush and kill a Santa Cruz County sheriff's deputy.

Long before the Jan. 6, 2021, attack on the U.S. Capitol, before a Santa Ana federal judge suggested former President Donald Trump committed crimes while trying to stop the counting of electoral votes, and before five members of the men's hate group the Proud Boys were indicted for sedition conspiracy, Carrillo and a group of men he met through Facebook allegedly **Boogaloo continues on A14**

Housing crisis spawns creative tech startups that fill niches

By Lauren Hepler

Father Chip Larrimore had a housing dilemma.

For the past decade, the reverend at Sausalito's Christ Episcopal Church has lived with his husband in a home provided by his congregation. But in a market as competitive as the North Bay, the couple's house that they bought in 1994 is the oldest in North America.

FROM THE COVER

Lake sharply receding amid drought

Mono Lake from page A1

with kayakers, beachgoers and tribal members have dried up. Fierce dust storms blow off the exposed lake bottom and dead the skies with some of the nation's worst air pollution. A land bridge forming to islands with tens of thousands of nesting gulls, threatening to bring coyotes within easy reach of baby birds.

"It affects everybody, that lake — we all live around it," said Marianne Denny, a 40-year resident of the basin who says "the white stuff," indicative of the lake's decline, is among the most she's ever seen. "Hopefully we'll live to see more water."

The drought bearing down on Mono Lake and the rest of California picks up on a two-decade run of extreme warming and drying. It's a product of the changing climate that has begun to profoundly reshape the landscape of the West and how people live within it. From less alpine snow and emptying reservoirs to parched forests and increased wildfire, the change is posing new, and often difficult, challenges.

At Mono Lake, an emblem of the state's wild and distinct beauty, the reckoning has been a long time coming.

For eight decades, the city of Los Angeles has piped water from four creeks that feed the lake to its facilities 320 miles to the south, sometimes diverting almost all of the inflow. It's a familiar California tale of old water rights yielding to modern demands.



At the home of Priscilla and Cole Hawkins, the exposed lake bed on the north shore means dust, and sometimes lots of it.



Mono Lake levels (feet above sea level). Water levels have dropped precipitously since Los Angeles began diverting water from Mono Lake's feeder creeks. Restrictions enacted in 1994 have yet to raise the lake to the targeted level.

1994 Diversions by the Los Angeles Dept. of Water and Power begin. Lake level, 6,417 feet

1994 State water board restricts diversions to reach higher target level

Targeted level: 6,292 feet

Strong desert winds can pick up the rippled-laden soil and carry it for miles.

"We call them dust devils," said Priscilla, whose off-grid property backs up to the lake and offers big vistas of the tall peaks in Yosemite National Park, at least when the air is clear.

Cole bought the house with his wife two decades ago, moving in full time a few years back. The dust is not a problem that often, he said, but when it is, it can be severe, limiting visibility to less than a quarter-mile. He compares the dust storms to fog banks with debris.

"When it gets really bad, we go inside or head for the hills," he said, looking out at a blue sky on this particular afternoon. "We come back to the house and it's almost like sand on the curtains."

The dust, which is tracked by the local air district under the label PM₁₀, or particulate matter that is no more than a diameter or less, is a health issue, district officials say. The particles can lodge deep in the lungs and cause tissue damage and lung inflammation.

In nine of the past 10 years, the Mono Lake area has had the distinction of ranking up more federal air quality violations for PM₁₀ than any other place in the nation, according to the district. In 2016, during last decade's drought, federal air standards were breached on 33 days.

The past few years haven't seen as many violations, according to data from the Great Basin Unified Air Pollution Control District. However, Phill Kiddis, air pollution control officer for the agency, says the trend line remains bad.

"Mono Lake probably has some of the best air quality in the nation just on the days of the year, but on windy days, we have some of the worst," he said.

With less snow and less runoff in the Sierra to fill the lake in recent years, Kiddis, who he just is to try to keep the skies clear, believes it's time for Los Angeles to further reduce its draws from the basin.

"Three inches of lake-level rise that we can get protects air quality," he said.

The State Water Resources Control Board, which regulates water draws, told The Chronicle it is paying attention to the lake, the basin and to the threat that compromised them.

While acknowledging that the lake's rise has stalled — lake levels have generally hovered a little more than 1 foot below the target for a decade — state officials say they've made progress at least stabilizing things.

Owens Lake, about 150 miles to the south, was not so fortunate. The lake was sucked dry by Southern California water diversions almost a century ago and is nothing but salt flats today.

The 1994 regulation at Mono Lake established caps on how

much Los Angeles can draw from the feeder creeks based on how high the lake is. This year, the city's diversions were limited to 4,500 acre-feet of water, about enough to supply 60,000 residents, according to the city. If the lake had been 1 foot lower, no water could have been drawn.

Eric Eldahl, a deputy director at the State Water Board, said the changing climate, notably the "aridification" of the West, has constrained lake levels more than regulators anticipated and the agency will likely have to re-evaluate its regulation.

"We're at the point where we do want to start asking, 'What are the next steps?' and 'What's the timeline for having a more thorough discussion?'" he said.

The Los Angeles Department of Water and Power insists that whatever comes of future deliberations, more water restrictions are not the answer.

In an email to The Chronicle, the department's managing water utility engineer, Paul Liu, said the city's draws had a negligible impact on the lake's decline, compared to drought and other climate factors.

Recently, in recent years, has reduced diversions to about 12% of the water in the creeks flowing to Mono Lake where it has water rights, he said. Meanwhile, the city has spent tens of millions of dollars to help preserve the creeks and promote healthy runoff. About one-third of the city's total water comes from these creeks, Liu said, a supply that is small but considered vital.

In a scenario where Mono basin exports to Los Angeles are reduced or cut off completely, that shortfall will have to be made up by increasing exports from the State Water Project on the Colorado River, which are both extremely strained and limited as well, wrote Liu.

But Christine Garrison, like many who live in the area, says something has to be done, and sooner rather than later.

On a recent morning, the Mono County native pulled into the Old Marina near Lee Vining, a spontaneous stop at the lake that took her back to her youth. A descendant of the Mono Lake Paiute, Garrison used to watch her grandmother walk the lakeshore and collect the pupae of the alkali fly, a traditional protein-rich delicacy called kutshi.

Garrison put on her "irrigation boots" with the intention of scooping up pupae, but then stopped. The waterline was too low to pupae.

"I had to go far out that I was afraid I'd get stuck in the sand," she said. "I could walk (the kutshi), though."

She added, "When there's no water in the lake, everything goes."

Kurtis Alexander is a San Francisco Chronicle staff writer. Email: kalexander@chronicle.com Twitter: @kurtisalexander

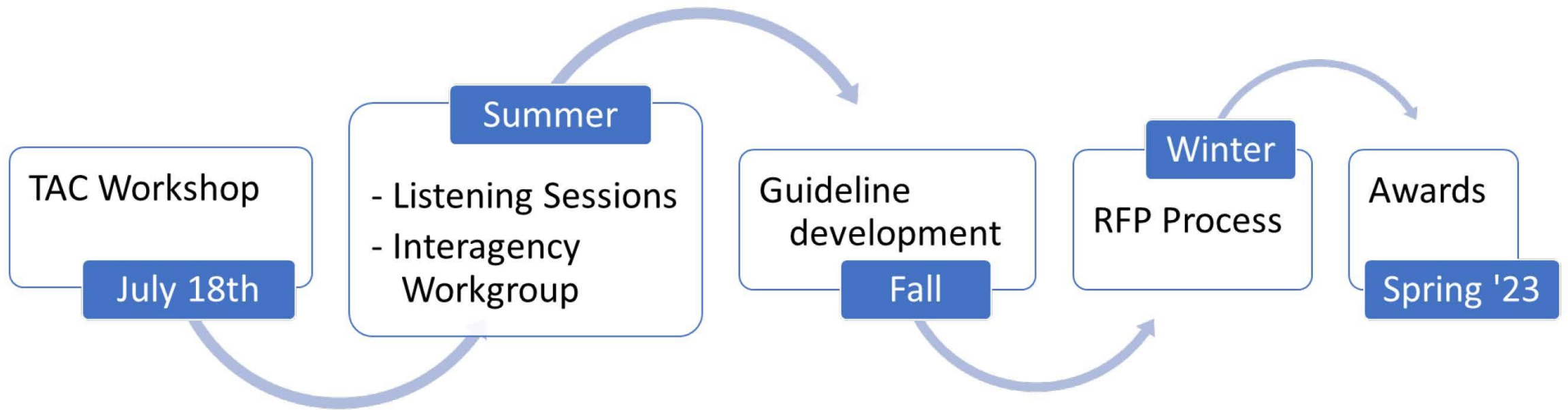
Item 7: Regional Resilience Grant Program

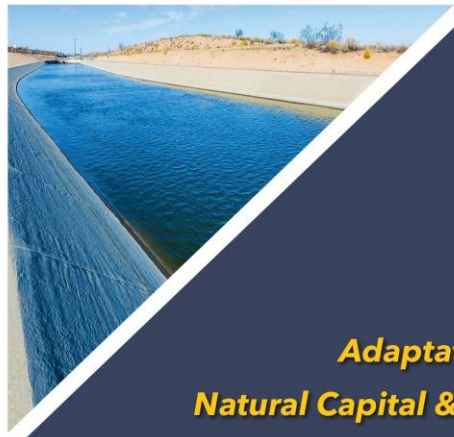
Background

OPR, through ICARP, received \$250M in the 2021 climate budget to fund a Regional Resilience Planning & Implementation Grant Program. Funding aims to:

- Support **local, regional, and tribal** entities' regional-scale climate resilience solutions.
- Support regions in advancing resilience through three major activities, **capacity-building, planning** and **project implementation**.
- Invest \$25m in round 1, of which at least \$12.5m will support **regional climate adaptation planning** and action plans

Tentative Timeline





A CHANGING CLIMATE
VULNERABILITY
IN CALIFORNIA'S
EASTERN SIERRA

Adaptation & Resilience Assessment
Natural Capital & Ecosystem Services Analysis
Recommended Actions



- Executive Summary
- Adaptation & Resilience Assessment
- Natural Capital & Ecosystem Services Analysis
- Recommended Actions
- Appendices:
 - A: Natural Capital Assessment Technical
 - B: Populations And Assets
 - C: Vulnerability Assessment Results Matrix
- Web Page: <https://mltpa.org/essrp/sustainable-recreation-and-tourism-project/climate-resilience>



Sierra Nevada Landscape Investment Strategy- DRAFT

1. Background & Goals

The Wildfire and Forest Resilience Task Force has catalyzed the development of a regional landscape investment strategy (LIS) in the Sierra Nevada Region. As part of the state's comprehensive strategy to improve forest health and reduce wildfire risk by treating one million acres annually by 2025, the goal of this strategy is to accelerate the development and implementation of collaborative, large-landscape initiatives that restore forest health and build wildfire resilience.

The LIS seeks to channel significant, multi-agency state and federal funding to land management partnerships that develop, plan, and implement collaborative, landscape-scale project portfolios. The intent is to coordinate, leverage, and ultimately scale state and federal investment across the Sierra Nevada Region. In doing so, the strategy can enable project proponents to efficiently fund and administer project portfolios, realize economies of scale for project implementation, and achieve resilience outcomes across a whole landscape.

Through its Watershed Improvement Program, the Sierra Nevada Conservancy (SNC) will lead an LIS in the Sierra Nevada Region to administer landscape grants to partnerships that can demonstrate readiness for funding and implementation at the landscape scale. The LIS will complement SNC's longstanding commitment to capacity-building, technical assistance, project development, and implementation.

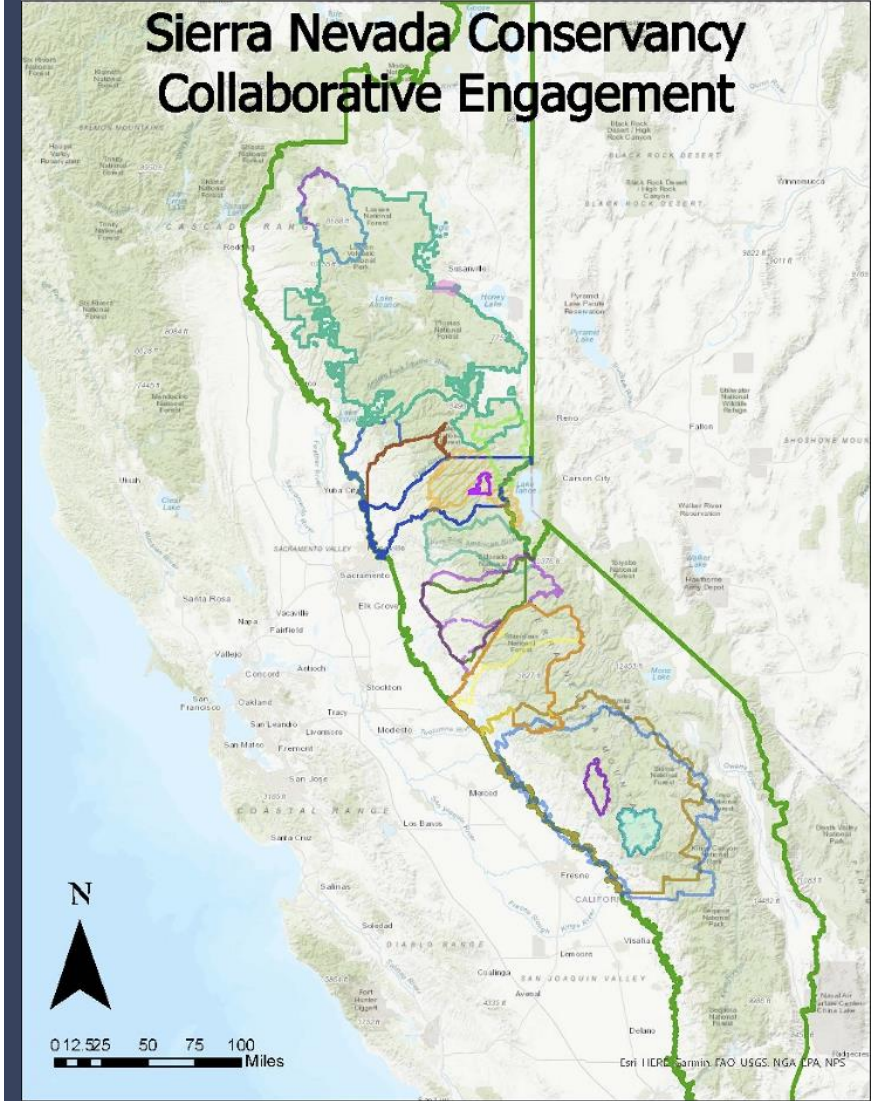
Responding to Challenges & Realizing Opportunities

High-severity wildfire, tree mortality, and other major forest disturbances increasingly occur across large landscapes (tens to hundreds of thousands of acres). However, funding has primarily remained scaled to and directed at the project-level (thousands of acres maximum). State and federal funding for forest restoration and wildfire resilience and recovery efforts is also fragmented across multiple agencies, departments, and programs that target similar outcomes. These constraints require the partnerships that strive to implement landscape-scale restoration initiatives to spend significant time and resources chasing multiple funding opportunities for discrete projects or project components – effectively redirecting resources away from on-the-ground resilience and hindering landscape-scale efforts.

The Sierra Nevada LIS can empower regional partnerships that have met certain readiness criteria to access longer-term, more flexible funding to support landscape-scale resilience and specific local needs. This strategy can also incentivize partnerships to assess and plan portfolios of work across a whole landscape.

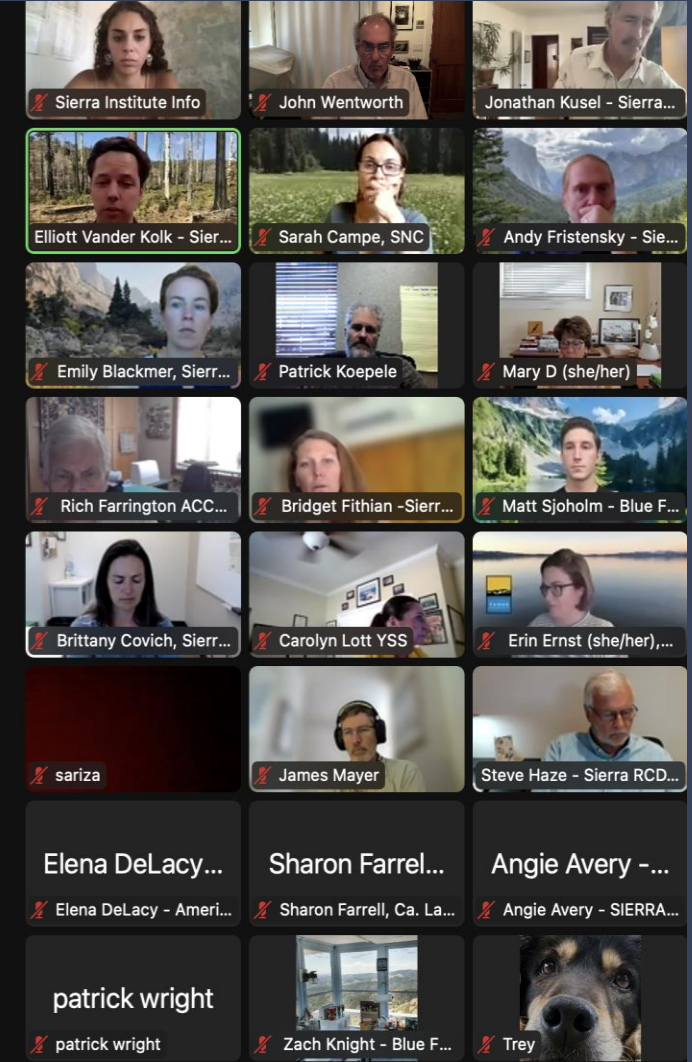
Disparate funding sources targeting similar outcomes also inhibit the state's ability to coordinate its own investments and track outcomes in a common reporting language. Utilizing SNC as an administrator for landscape grants in the Sierra Region can simplify administrative processes and streamline outcomes assessments and reporting, while also ensuring that the LIS benefits from SNC's granting and grants management experience, regional expertise, and deep partner relationships.

Situations / Awareness: State



Proposed Landscape Grant Program

- Align priorities
- Multiple funding sources
- Application and evaluation process
- Evaluation Criteria



Situations / Awareness: State



3-Tier Regional Framework



Regional Framework

- Build capacity

Align regional efforts with state & federal priorities

Build sustainable pipelines of projects

Move towards block grants to regions

Situations / Awareness: State


PROGRESS ▾ THE PLAN

CALIFORNIA
WILDFIRE & FOREST RESILIENCE
TASK FORCE

ABOUT ▾ MEETINGS

🔍

♿



THE FRONT LINES OF LANDSCAPE HEALTH

In a response commensurate to the challenge, Governor Gavin Newsom created the California Wildfire & Forest Resilience Task Force, bringing together an unprecedented coalition of the best available resources for preventing catastrophic wildfires by creating healthier, more sustainable natural environments. The Governor's Task Force is a proactive effort that is already showing progress towards long term forest health and safe, sustainable coexistence with fire.

[LEARN MORE](#)

Regional Projects

- **State Funding for Projects on Federal Lands**
- **Regional Economic Development Planning**
- **ESSRP Tribal Consultation Sub Committee**
- **ESSRP MOU**
- **IFNF Inyo Project Update**
- **ESCOG Joint Powers Authority – Elaine Kabala, ESCOG Executive Director**
 - **ESCOG Meeting: Friday, August 12**
 - **Sustainable Recreation + Ecosystem Management Program (SREMP)**
- **Dispersed Camping Mitigation: Camp Like a Pro – Update**
- **ESSRP – Full Grant Proposal requested by SNC from MLTPA for ESSRP Support**

Sustainable Recreation Stakeholders



SUSTAINABLE RECREATION CALREC Vision KEY WORKING GROUP



A screenshot of the website for the California Wildfire & Forest Resilience Task Force. The header is dark green with a white tree icon and the text 'CALIFORNIA WILDFIRE & FOREST RESILIENCE TASK FORCE'. Navigation links include 'PROGRESS', 'THE PLAN', 'ABOUT', and 'MEETINGS'. A search icon is also present. Below the header is a wide image of a forest with tall redwood trees. A dark green banner across the middle contains the title 'THE FRONT LINES OF LANDSCAPE HEALTH' and a paragraph of text. At the bottom right is the official seal of the Governor of the State of California, featuring the text 'SEAL OF THE GOVERNOR OF THE STATE OF CALIFORNIA' and 'XL'.

Butte County Forest Advisory Committee - Monday, August 22, 2022

Sustainable Recreation Stakeholders

Joint Strategy / Co-Leads



U.S. Forest Service

Jim Bacon

Director of Public Services
Pacific Southwest Region



State of California

Angela Avery

Executive Officer

Sierra Nevada Conservancy

What Is This All About?

Overview of the Task Force and the Sustainable Recreation /
CALREC Vision Working Group



CA | WILDFIRE & FOREST RESILIENCE | TASK FORCE



**SUSTAINABLE
RECREATION
CALREC Vision
KEY WORKING GROUP**





CALIFORNIA
WILDFIRE & FOREST RESILIENCE
TASK FORCE

PROGRESS ▾

THE PLAN

ABOUT ▾

MEETINGS



Develop and implement an interagency framework for establishing healthy and resilient forests and communities that can withstand and adapt to wildfire, drought, and a changing climate.





CALIFORNIA
WILDFIRE & FOREST RESILIENCE
TASK FORCE

PROGRESS ▾

THE PLAN

ABOUT ▾

MEETINGS



ACTION PLAN

THE ACTION PLAN IS A
COMPREHENSIVE STRATEGY
FOR THE GOVERNOR'S TASK
FORCE.





CALIFORNIA
WILDFIRE & FOREST RESILIENCE
TASK FORCE

PROGRESS ▾

THE PLAN

ABOUT ▾

MEETINGS



SUSTAINABLE
RECREATION
CALREC Vision
KEY WORKING GROUP





WORK GROUP: SUSTAINABLE & ACCESSIBLE RECREATION

PARTNERING ORGANIZATIONS

- CA State Parks** – Alexandra Stehl, Planning Chief
- Bureau of Land Management** – Andrew Burrows, Lead Outdoor Recreation Planner
- Recreate Responsibly CA** – Haley Caruso, Co-Lead
- CA Natural Resources Agency** – Katherine Toy, Deputy Secretary for Access
- U.S. Forest Service, Region 5** – Katy Parr, Acting Deputy Director of Public Services
- CA Landscape Stewardship Network** – Kevin Wright, Policy & Steering Committee Member
- Sierra Nevada Conservancy** – Matt Driscoll, Area Representative
- U.S. Forest Service, Region 5** – Nancy Parachini, Deputy Director of Public Services
- U.S. Forest Service, Region 5** – Nora Campbell, Social Scientist
- LA County Department of Parks & Recreation** – Norma Edith Garcia-Gonzalez, Director
- NOAA** – Paul Michel, Regional Policy Coordinator
- National Park Service** – Ray Murray, Chief of Partnerships

WORK GROUP LEADS:

- Jim Bacon**, Director of Public Services – U.S. Forest Service, Region 5
- Angela Avery**, Executive Officer, Sierra Nevada Conservancy

WORK GROUP CONVENER + FACILITATOR:



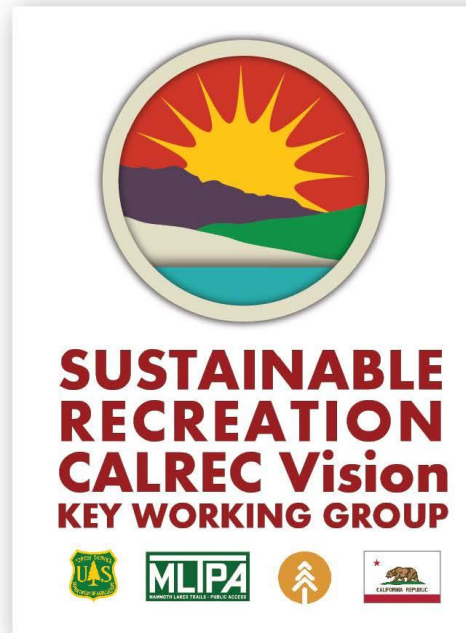
**SUSTAINABLE
RECREATION
CALREC Vision
KEY WORKING GROUP**



Sustainable Recreation Stakeholders

Working Draft Joint Strategy for Sustainable Recreation

August 15, 2022



Working Draft Joint Strategy for Sustainable Outdoor Recreation – August 15, 2022

STRENGTHEN SUSTAINABLE OUTDOOR RECREATION IN CALIFORNIA

California's existing recreational infrastructure needs to be retooled and new facilities designed such that resiliency and adaptation to climate change are core functions, while still providing a positive user experience that connects recreational users with the natural world. Through education and awareness, recreational users will become stewards who contribute to and protect the natural resources located across California's public lands and waters. Wildfire prevention and response, as well as forest health efforts, must anticipate the safety, hazards, and infrastructure and programming needs of our recreation communities, and simultaneously recognize our communities' strengths. By ensuring healthy lands and waters, recreational users feel connected to nature in places and communities that are socially, economically, and environmentally rich and resilient.

Goal 1: California and its federal partners will promote wildfire resilience and healthy ecosystems by developing and maintaining a sustainable outdoor recreation system that connects recreational users to the benefits and the wonders of the natural world throughout the state.

Key Actions

Communication & Visitor Management

- 1.1 Maintain Public Access as the Climate Changes:** Develop climate-smart best practices for programs that enhance public access to recreation on public lands and waters. Best practices may include implementing resilience measures, communicating in real time with visitors about current conditions, and transitioning to adaptive management. Recreation sites may require increased capacity to anticipate and respond to shifting seasonal recreation patterns. Land managers will monitor use, mitigate over-use in high use areas, and provide transportation alternatives to reduce congestion.
- 1.2 Develop Educational Materials Targeted at Human Causes of Ignition:** Create and distribute educational materials in multiple languages targeted at human causes of ignition, such as fireworks, smoking, shooting, campfires, debris burning, and dragging chains.
- 1.3 Provide Communications Staffing and Information During Wildfires:** Provide staffing and information during wildfires to help guide visitor use patterns. Partner with Destination Management Organizations (DMOs), chambers of commerce, recreation and stewardship groups, and local media to communicate in multiple languages with residents and visitors regarding closures, restrictions, and open facilities.
- 1.4 Protect Recreational Facilities During Active Fires:** Coordinate with CalFire and federal land managers to facilitate fire response on public lands to protect vital recreation assets during fires.

Online Survey at [calrecvision.org / events](https://calrecvision.org/events)
Or send comments to info@calrecvision.org

For more information visit calrecvision.org
Send email to info@calrecvision.org

Page 2 of 12



CA | WILDFIRE & FOREST RESILIENCE | TASK FORCE



SUSTAINABLE
RECREATION
CALREC Vision
KEY WORKING GROUP



Working Draft Joint Strategy Goals & Key Actions

- 1. STRENGTHEN SUSTAINABLE OUTDOOR RECREATION IN CALIFORNIA**
 - *13 Key Actions*
- 2. INSPIRE INCLUSION AND ACCESS FOR ALL THROUGHOUT CALIFORNIA**
 - *4 Key Actions*
- 3. PROVIDE DIVERSITY OF RECREATION EXPERIENCES**
 - *4 Key Actions*
- 4. PROMOTE THE HEALTH AND SAFETY OF ALL CALIFORNIANS**
 - *6 Key Actions*
- 5. SUPPORT ECONOMIES THAT ENHANCE SUSTAINABLE RECREATION**
 - *10 Key Actions*



What's Next + Stay In Touch

The Sustainable Recreation / CALREC Vision Working Group

“A Joint Strategy for Sustainable Outdoor Recreation in California”

California Wildfire & Forest Resilience Task Force



COMING UP

SIERRA NEVADA REGIONAL MEETING

- SEPTEMBER 27/28 IN GRASS VALLEY

LEARN MORE

The banner features a background image of a forested mountain range at sunset. The text is overlaid in white and yellow. A yellow arrow-shaped button on the right contains the text 'LEARN MORE'.



CA | WILDFIRE & FOREST RESILIENCE | TASK FORCE



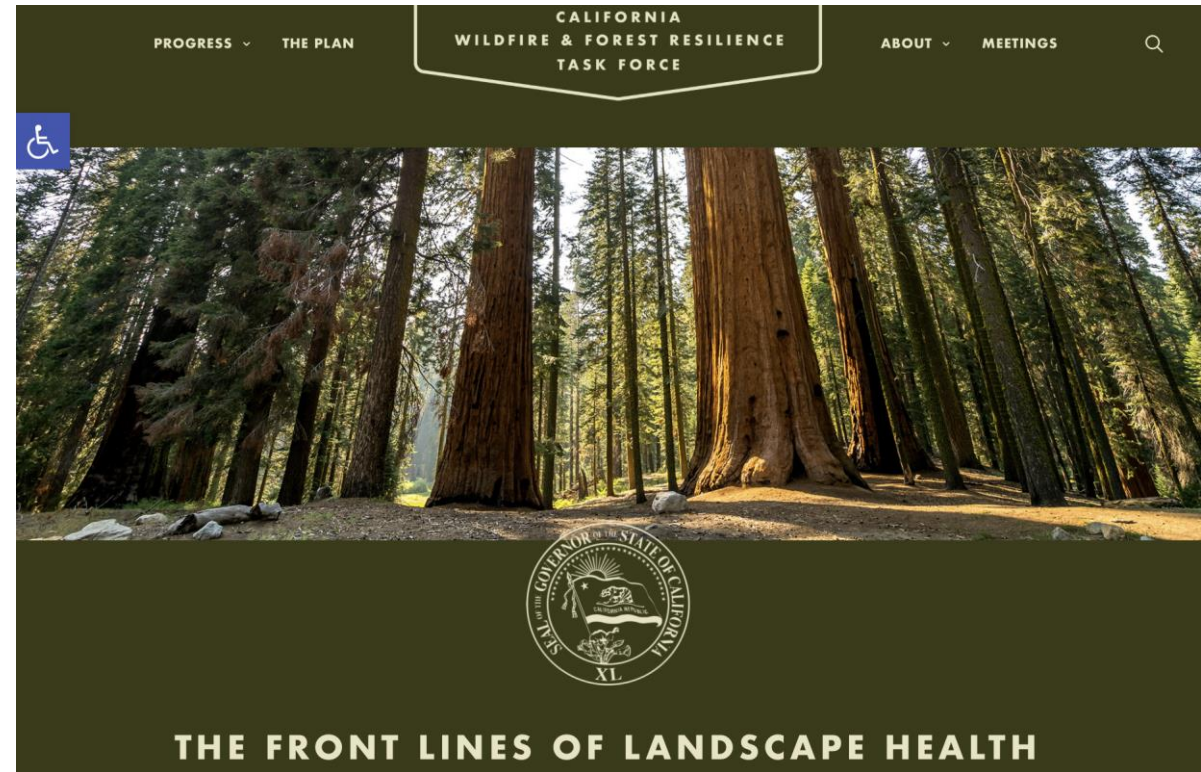
SUSTAINABLE
RECREATION
CALREC Vision
KEY WORKING GROUP



What's Next + Stay In Touch



<https://www.calrecvision.org>



<https://wildfiretaskforce.org>

Send your thoughts or ideas to info@calrecvision.org

What's Next + Stay In Touch

Thank You!



**SUSTAINABLE
RECREATION
CALREC Vision
KEY WORKING GROUP**



CA | WILDFIRE & FOREST RESILIENCE | TASK FORCE



**SUSTAINABLE
RECREATION
CALREC Vision
KEY WORKING GROUP**



DISCUSSION AND Q&A

What questions or comments do you have for us?



ILG RESOURCES AND TRAININGS

Sustainable & Resilient Communities

- <https://www.ca-ilg.org/climate-action>
 - Sustainability Best Practices
 - Climate Adaptation & Resilience
 - Beacon Program – www.ca-ilg.org/BeaconProgram

Public Engagement Resources

- www.ca-ilg.org/engagement
 - **TIERS Public Engagement Training, October 19-20**
 - Basics of Public Engagement
 - ILG's TIERS Public Engagement Framework

Leadership & Governance Resources

- www.ca-ilg.org/leadership
 - Effective Boards and Councils

JOIN OUR WIDESPREAD NETWORK OF LOCAL GOV'T LEADERS



58 Counties

482 Cities

2,500+ Special Districts

20,000+ Local Agency Leaders

www.ca-ilg.org/stayinformed



@instlocgov



Institute for Local Government



@InstituteForLocalGovt



RECORDING AVAILABLE SOON



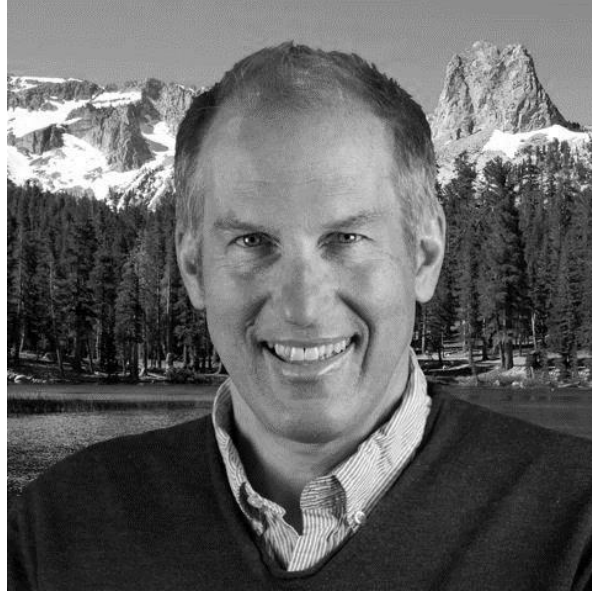
The recorded presentation and materials will be shared electronically with all attendees a few days after the webinar.

Thank you for joining us!



Danna Stroud

danna.stroud@gobiz.ca.gov



John Wentworth

jwentworth@townofma
mmothlakes.ca.gov



Melissa Kuehne

mkuehne@ca-ilg.org



Bob Gardner

bgardner@mono.ca.gov